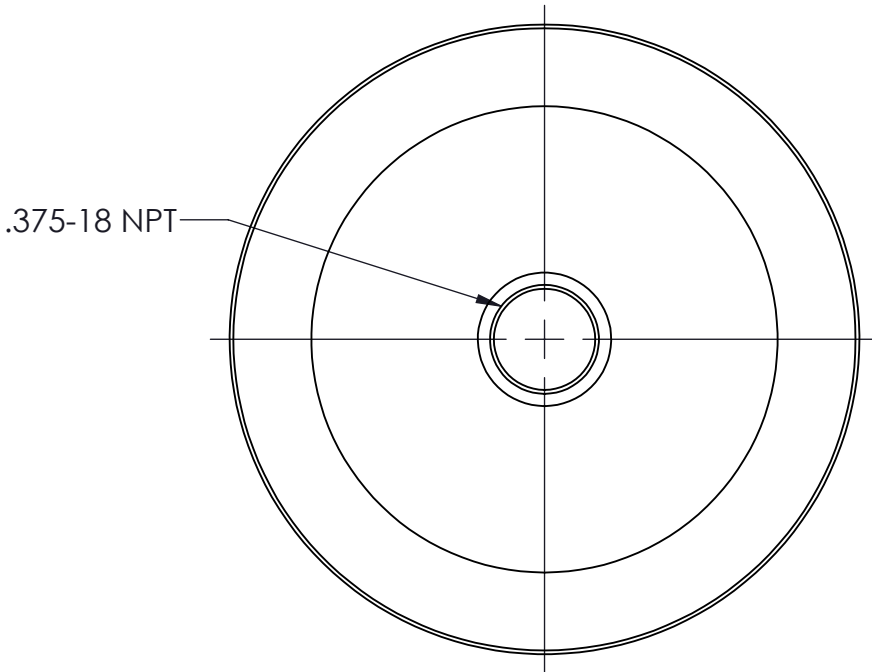
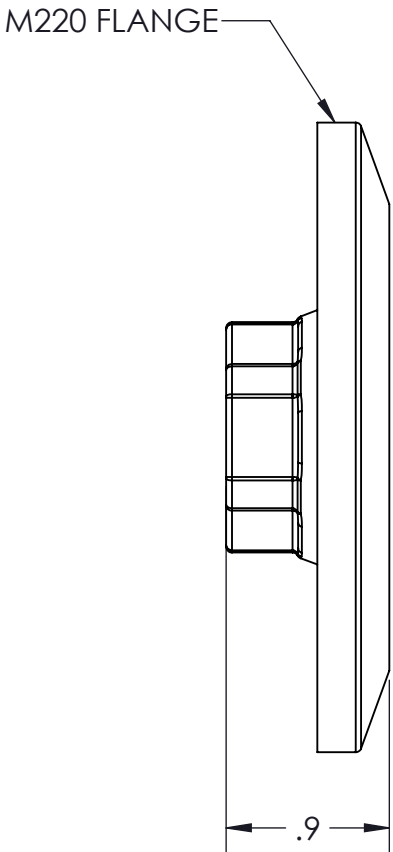
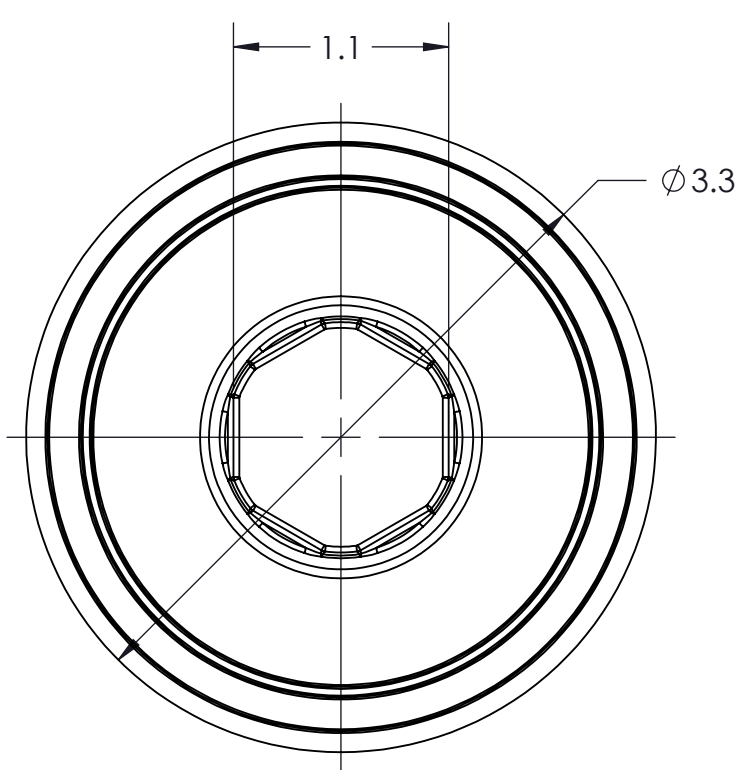
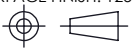


CONFIDENTIAL AND PROPRIETARY TO
KZCO, INC. UNAUTHORIZED USE, DISCLOSURE
OF REPRODUCTION IS PROHIBITED

FOR MORE DETAILS AND INFORMATION, CONTACT: SALES@KZCO.COM



CONFORMS TO ASME
STANDARDS Y14.5-2009

-STANDARD TOLERANCES- -ALL DIMENSIONS IN INCHES [mm]-	
.X±0.1	TOTAL RUNOUT: .005 FIM CORNER BREAK: .001/.010 SURFACE FINISH: 125 µIN 
.XX±0.001	
.XXX±0.005	
.XX°±1°	
DENSITY: 0.037 LBM/CU IN MASS: 0.101 LBM SURF AREA: 23.647 SQ IN VOLUME: 2.745 CU IN	

DESIGNED BY: Larry Erdkamp
DRAWN BY: Aaron Goodwin
APPROVED:
SCALE: 1:1
SIZE: B
MATERIAL: POLYPRO, 30% GF, GREY

 <div>23860 KZ PARKWAY GREENWOOD, NE 68366 USA PHONE: +1.402.944.2767 FAX: +1.402.944.2402</div>	
TITLE: FITTING, 2" FP FLANGE, BLANK	
PART NO: 100264	REV: 1
DRAWING NO: SALES_100264	SHEET: 1 OF 1