

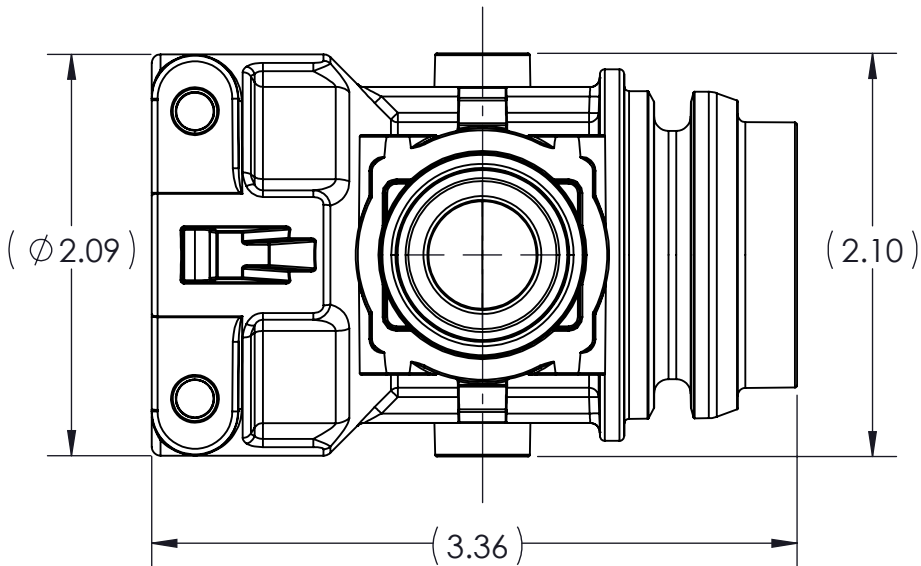
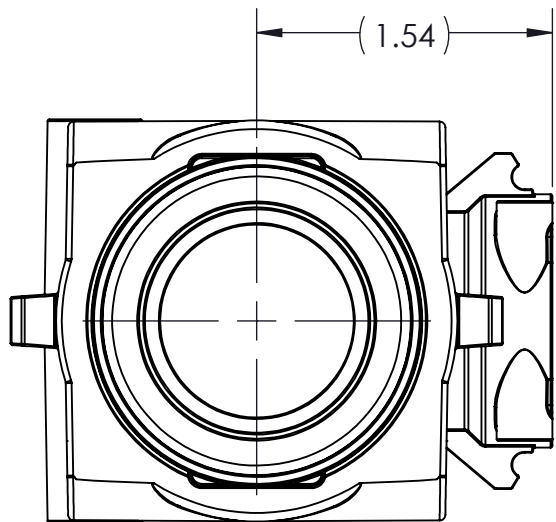
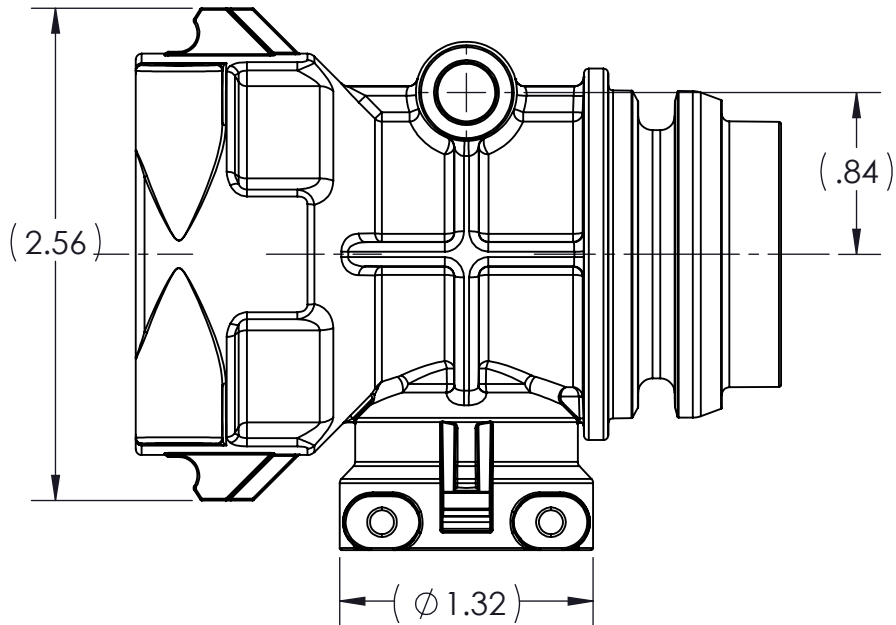
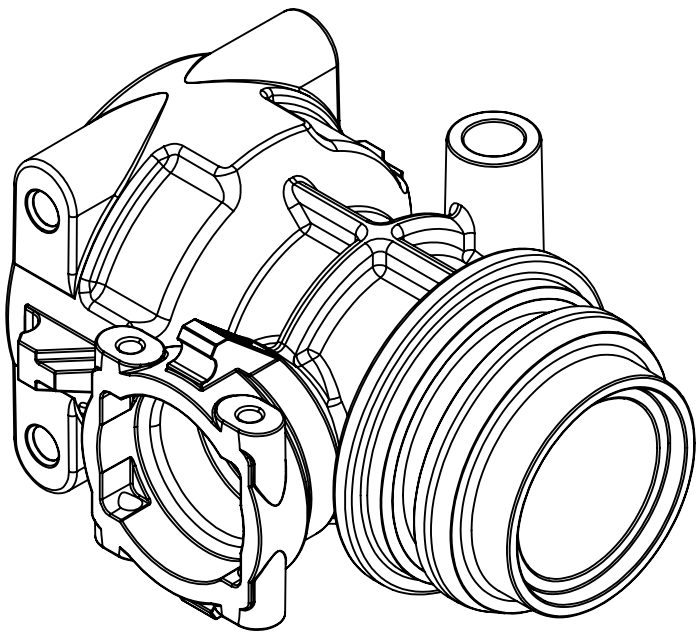
4

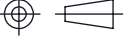
3

2

1

CONFIDENTIAL AND PROPRIETARY TO  
KZCO, INC. UNAUTHORIZED USE, DISCLOSURE  
OF REPRODUCTION IS PROHIBITED



-STANDARD TOLERANCES- -ALL DIMENSIONS IN INCHES [mm]-	
.X±0.1 .XX±0.001 .XXX±0.005 .XX°±1°	TOTAL RUNOUT: .005 FIM CORNER BREAK: .001/.010 SURFACE FINISH: 125 µIN 
DENSITY: 0.051 LBM/CU IN MASS: 0.233 LBM SURF AREA: 54.716 SQ IN VOLUME: 4.616 CU IN	

CONFORMS TO ASME  
STANDARDS Y14.5-2009

DESIGNED BY: Evan Schwahn

DRAWN BY: Evan Schwahn

APPROVED:

SCALE: 1:1

SIZE: B

MATERIAL: NYLON 66, 33% GLASS FILLED, BLACK

**KZCO** inc.

23860 KZ PARKWAY  
GREENWOOD, NE 68366 USA  
PHONE: +1.402.944.2767  
FAX: +1.402.944.2402

TITLE: MANIFOLD, QF, QF X QD TEE

PART NO: 203-0064

REV: 0.2

DRAWING NO: 203-0064

SHEET: 4 OF 4

4

3

2

1