

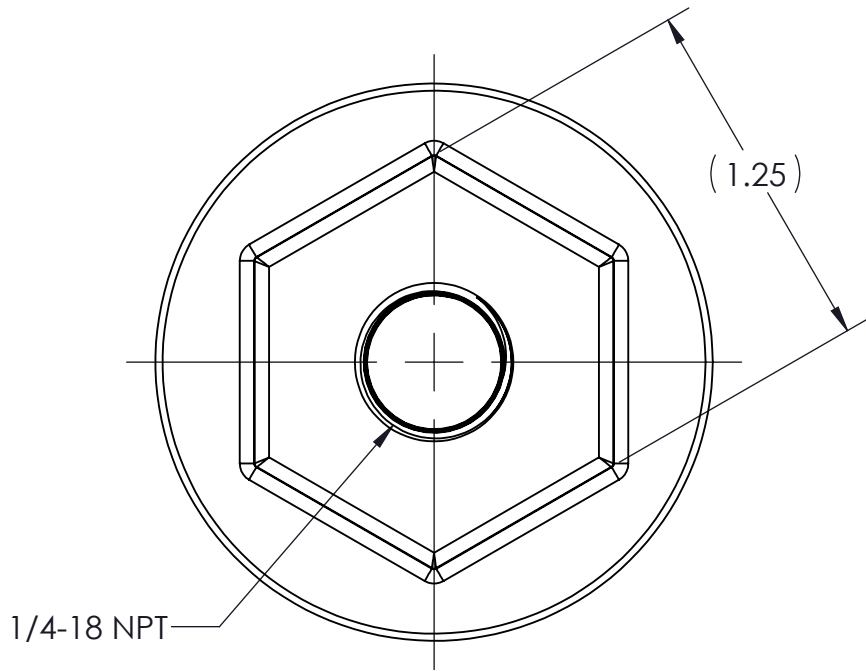
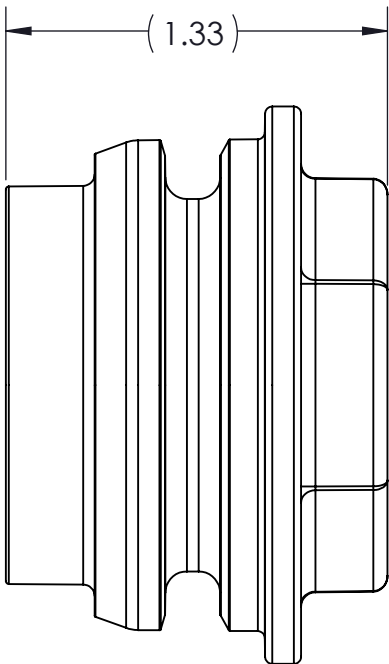
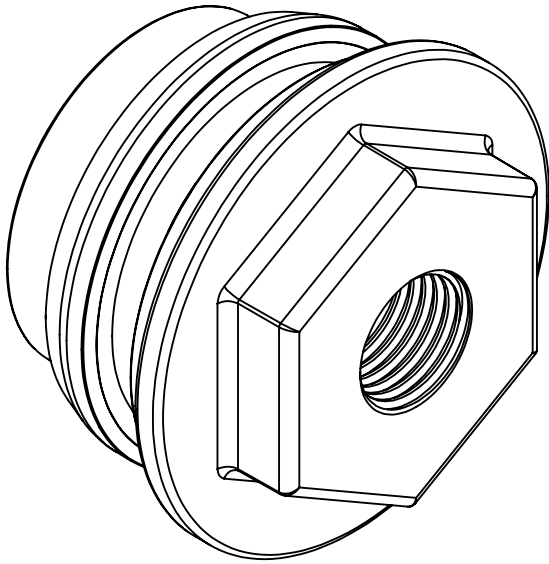
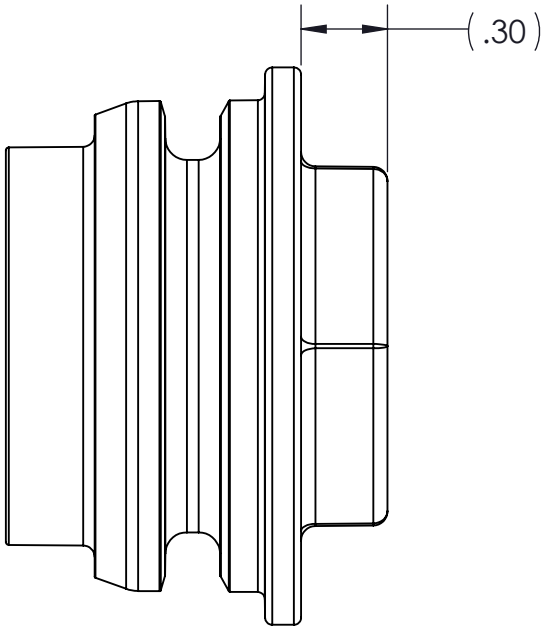
4

3

2

1

CONFIDENTIAL AND PROPRIETARY TO  
KZCO, INC. UNAUTHORIZED USE, DISCLOSURE  
OF REPRODUCTION IS PROHIBITED



-STANDARD TOLERANCES- -ALL DIMENSIONS IN INCHES [mm]-	
.X±0.1	TOTAL RUNOUT: .005 FIM
.XX±0.001	CORNER BREAK: .001/.010
.XXX±0.005	SURFACE FINISH: 125 µIN
.XX°±1°	
DENSITY: 0.051 LBM/CU IN MASS: 0.083 LBM SURF AREA: 15.870 SQ IN VOLUME: 1.640 CU IN	

DESIGNED BY: Evan Schwahn

DRAWN BY: Evan Schwahn

APPROVED:

SCALE: 3:2

SIZE: B

MATERIAL: NYLON 66, 33% GLASS FILLED, BLACK

**KZCO** inc.

23860 KZ PARKWAY  
GREENWOOD, NE 68366 USA  
PHONE: +1.402.944.2767  
FAX: +1.402.944.2402

TITLE: FITTING, QF, CAP W/ 1/4-18 NPT PORT, MALE

PART NO: 211-0313

REV: 0.3

DRAWING NO: 211-0313

SHEET: 2 OF 2

CONFORMS TO ASME  
STANDARDS Y14.5-2009

4

3

2

1