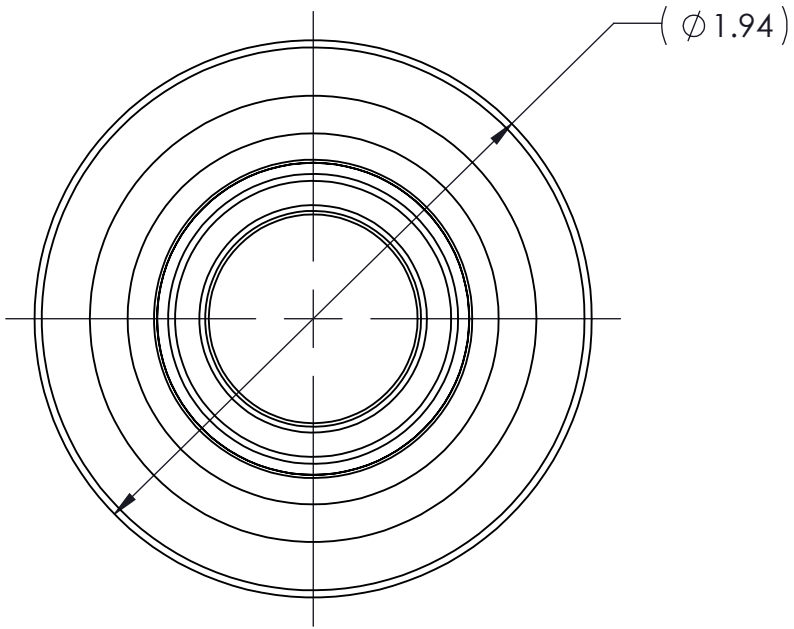
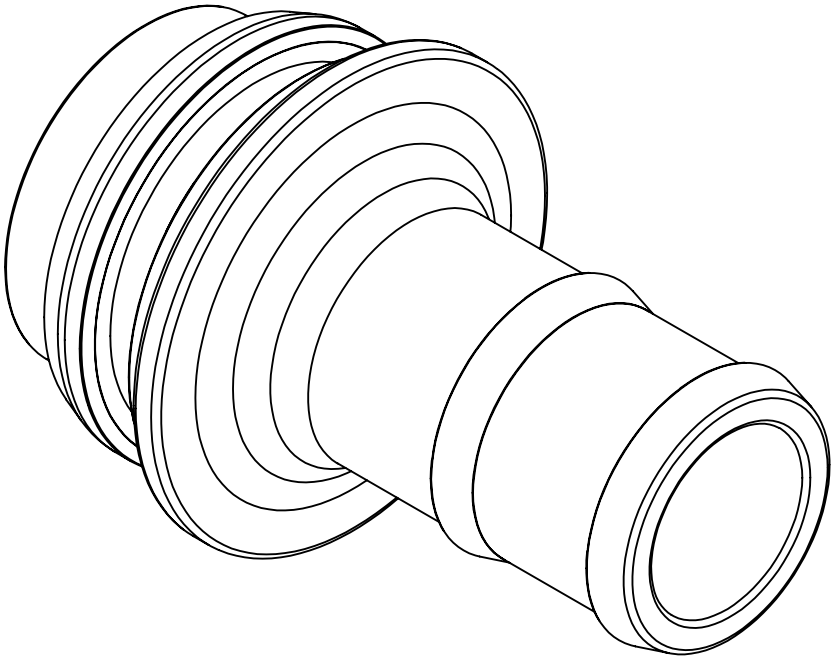
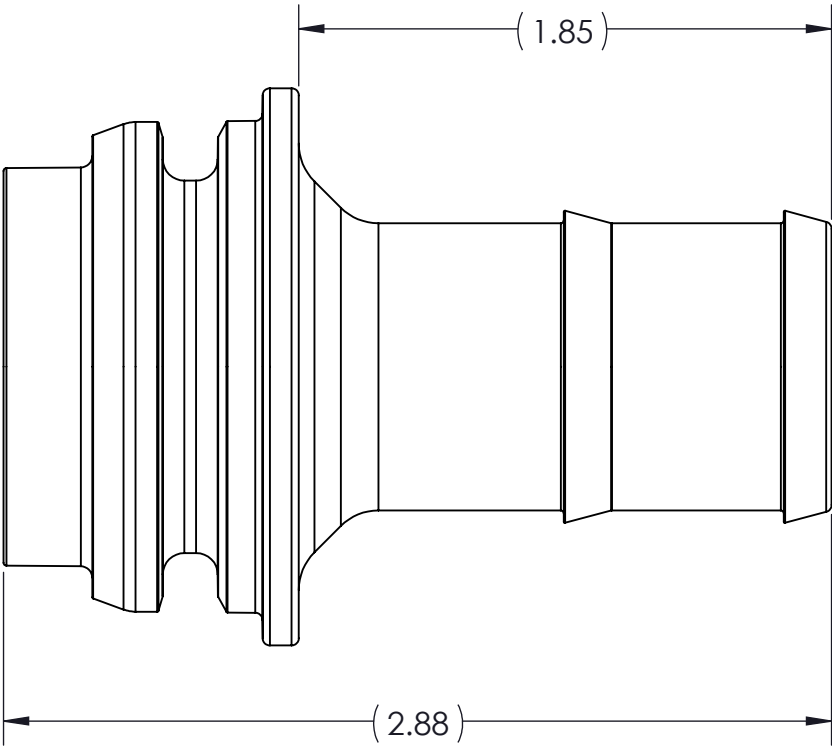
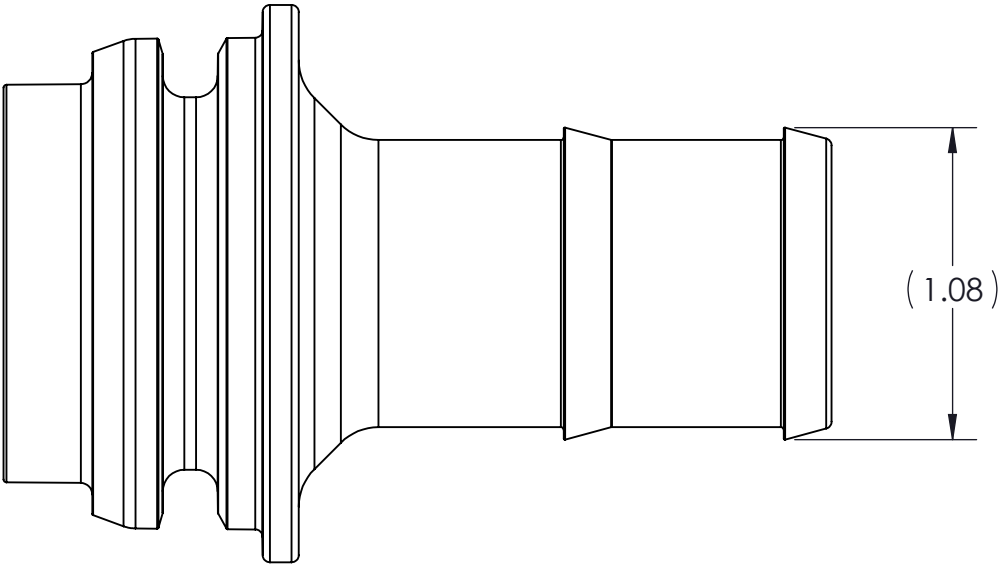


CONFIDENTIAL AND PROPRIETARY TO
KZCO, INC. UNAUTHORIZED USE, DISCLOSURE
OF REPRODUCTION IS PROHIBITED



CONFORMS TO ASME
STANDARDS Y14.5-2009

-STANDARD TOLERANCES- -ALL DIMENSIONS IN INCHES [mm]-	
.X±0.1 .XX±0.001 .XXX±0.005 .XX°±1°	TOTAL RUNOUT: .005 FIM CORNER BREAK: .001/.010 SURFACE FINISH: 125 µIN
DENSITY: 0.051 LBM/CU IN MASS: 0.100 LBM SURF AREA: 23.663 SQ IN VOLUME: 1.977 CU IN	

DESIGNED BY: Evan Schwahn	APPROVED:
DRAWN BY: Evan Schwahn	
SCALE: 3:2	SIZE: B
MATERIAL: NYLON 66, 33% GLASS FILLED, BLACK	

KZCO inc.		23860 KZ PARKWAY GREENWOOD, NE 68366 USA PHONE: +1.402.944.2767 FAX: +1.402.944.2402	
TITLE: FITTING, QF, 1" HB, MALE		REV: 0.3	
PART NO: 211-0314		DRAWING NO: 211-0314	
SHEET: 2 OF 2			