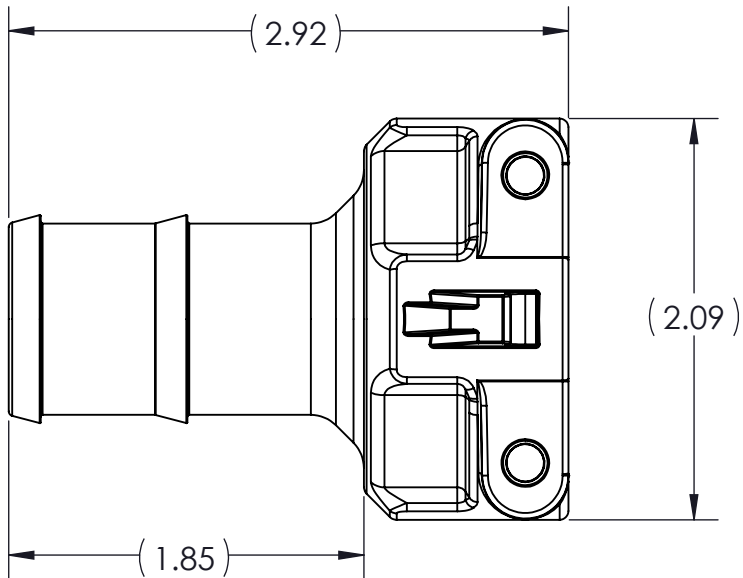
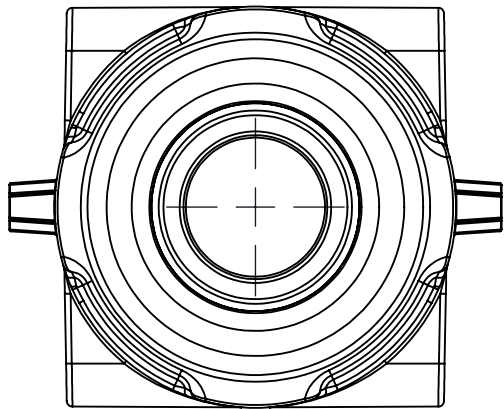
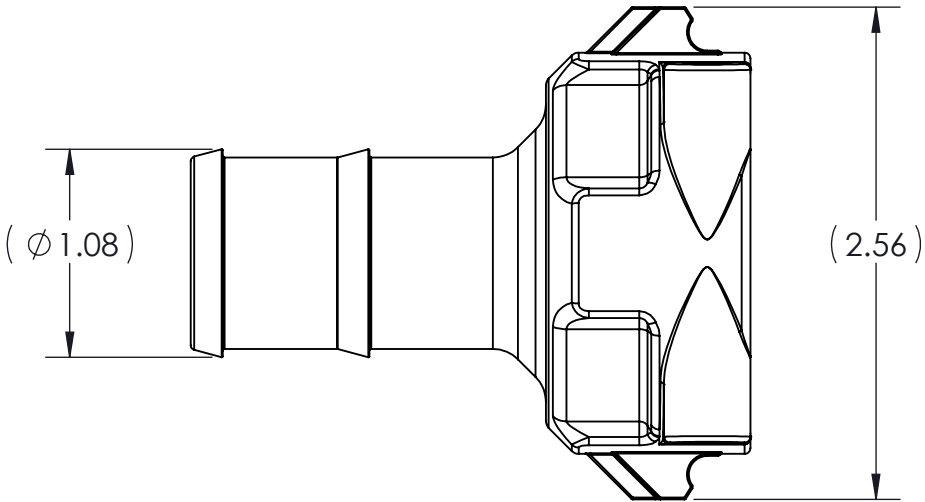
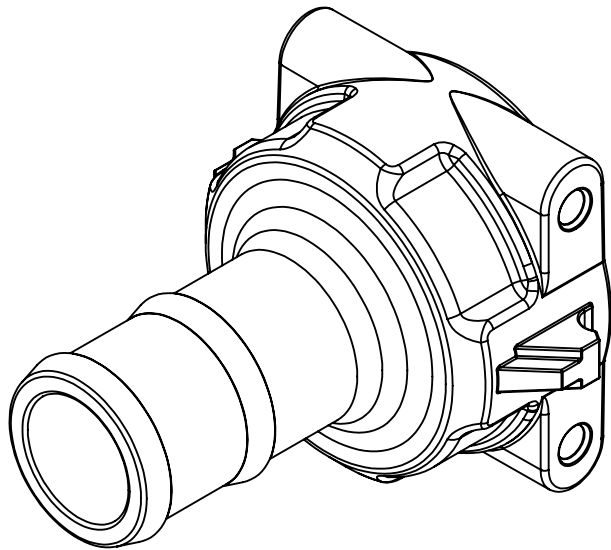
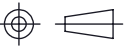


CONFIDENTIAL AND PROPRIETARY TO
KZCO, INC. UNAUTHORIZED USE, DISCLOSURE
OF REPRODUCTION IS PROHIBITED



CONFORMS TO ASME
STANDARDS Y14.5-2009

-STANDARD TOLERANCES- -ALL DIMENSIONS IN INCHES [mm]-	
.X±0.1 .XX±0.001 .XXX±0.005 .XX°±1°	TOTAL RUNOUT: .005 FIM CORNER BREAK: .001/.010 SURFACE FINISH: 125 µIN 
DENSITY: 0.051 LBM/CU IN MASS: 0.124 LBM SURF AREA: 30.298 SQ IN VOLUME: 2.446 CU IN	

DESIGNED BY: Evan Schwahn
DRAWN BY: Evan Schwahn
APPROVED:
SCALE: 1:1
SIZE: B
MATERIAL: NYLON 66, 33% GLASS FILLED, BLACK

 <div>23860 KZ PARKWAY GREENWOOD, NE 68366 USA PHONE: +1.402.944.2767 FAX: +1.402.944.2402</div>	
TITLE: FITTING, QF, 1" HB, FEMALE	
PART NO: 211-0315	REV: 0.3
DRAWING NO: 211-0315	SHEET: 3 OF 3