

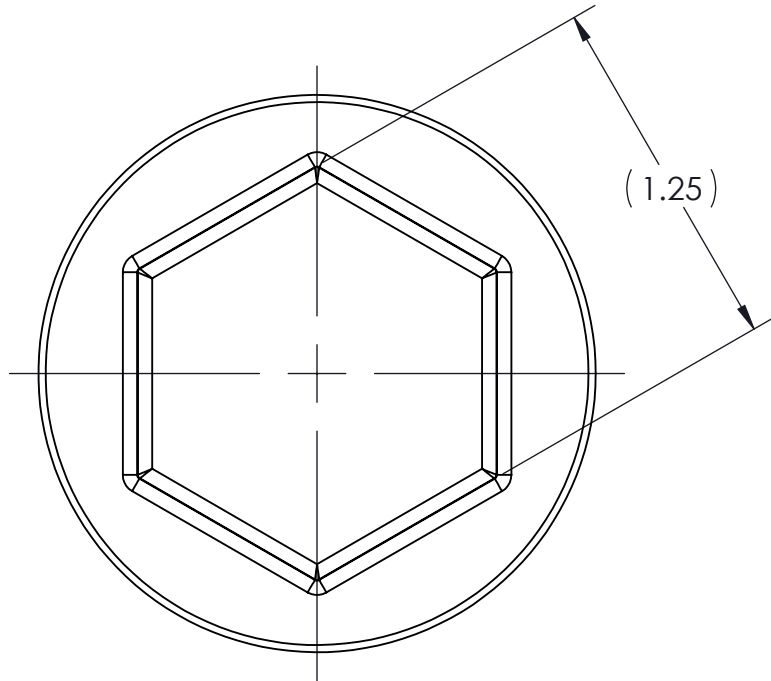
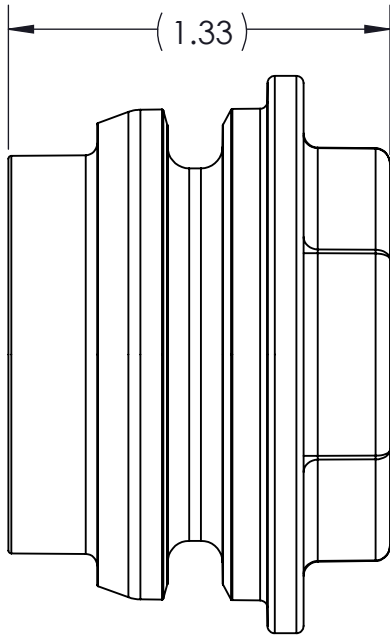
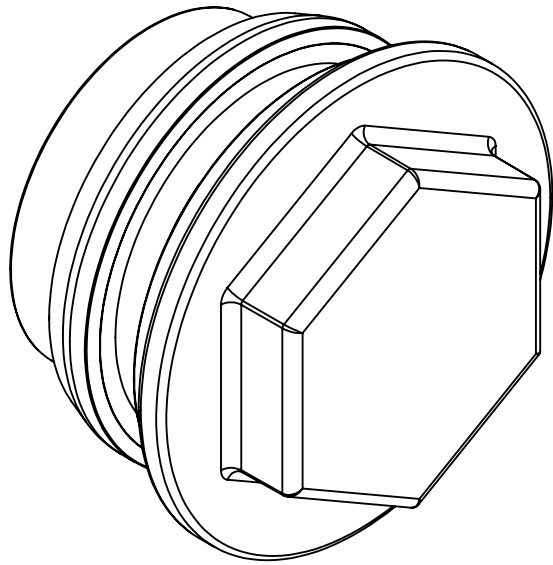
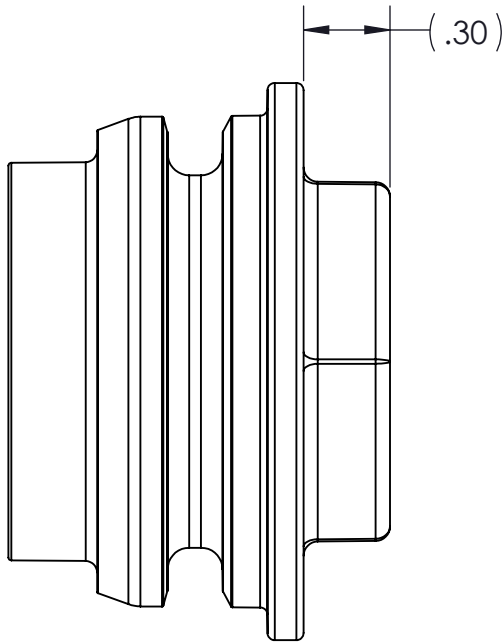
4

3

2

1

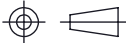
CONFIDENTIAL AND PROPRIETARY TO  
KZCO, INC. UNAUTHORIZED USE, DISCLOSURE  
OF REPRODUCTION IS PROHIBITED



-STANDARD TOLERANCES-  
-ALL DIMENSIONS IN INCHES [mm]-

.X±0.1  
.XX±0.001  
.XXX±0.005  
.XX°±1°

TOTAL RUNOUT: .005 FIM  
CORNER BREAK: .001/.010  
SURFACE FINISH: 125 µIN



DENSITY: 0.051 LBM/CU IN  
MASS: 0.088 LBM  
SURF AREA: 15.216 SQ IN  
VOLUME: 1.731 CU IN

CONFORMS TO ASME  
STANDARDS Y14.5-2009

DESIGNED BY: Evan Schwahn

DRAWN BY: Evan Schwahn

APPROVED:

SCALE: 3:2

SIZE: B

MATERIAL: NYLON 66, 33% GLASS FILLED, BLACK



23860 KZ PARKWAY  
GREENWOOD, NE 68366 USA  
PHONE: +1.402.944.2767  
FAX: +1.402.944.2402

TITLE: FITTING, QF, CAP BLANK, MALE

PART NO: 211-0316

DRAWING NO: 211-0316

REV: 0.3

SHEET: 2 OF 2

4

3

2

1