

4

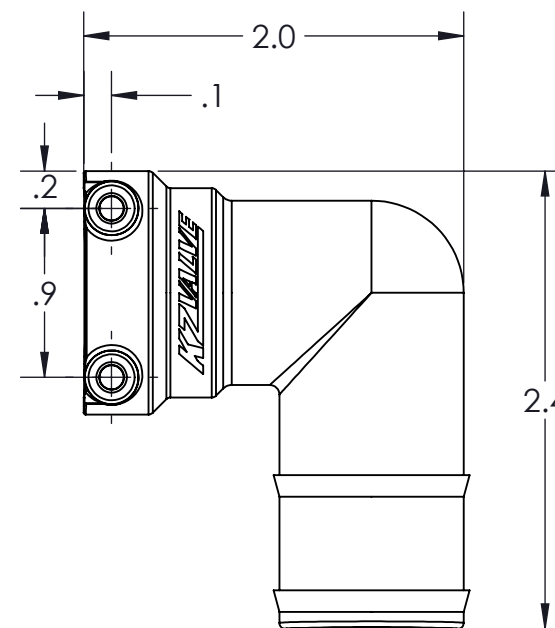
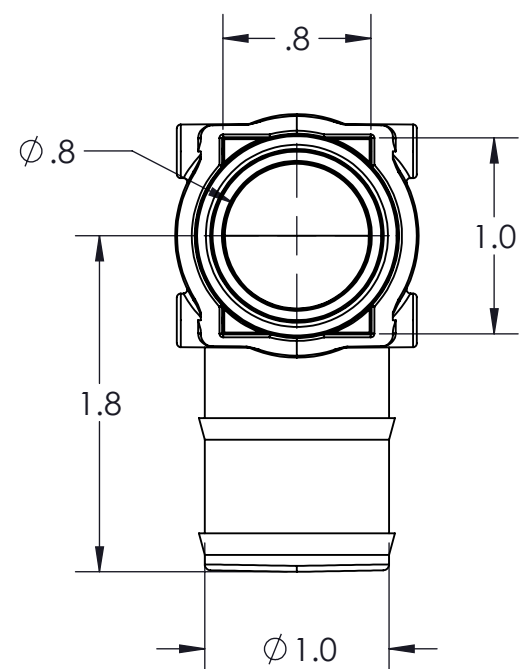
3

2

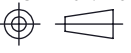
1

CONFIDENTIAL AND PROPRIETARY TO KZCO, INC. UNAUTHORIZED USE, DISCLOSURE OF REPRODUCTION IS PROHIBITED

FOR MORE DETAILS AND INFORMATION, CONTACT: SALES@KZCO.COM



CONFORMS TO ASME STANDARDS Y14.5-2009

-STANDARD TOLERANCES- -ALL DIMENSIONS IN INCHES [mm]- .X±0.1 .XX±0.001 .XXX±0.005 .X°±1°		DESIGNED BY: Nathaniel Rasmussen DRAWN BY: Jackson Fairchild APPROVED: SCALE: 1:1 SIZE: B MATERIAL: Polypropylene, 30% GF, Black		 23860 KZ PARKWAY GREENWOOD, NE 68366 USA PHONE: +1.402.944.2767 FAX: +1.402.944.2402	
TOTAL RUNOUT: .005 FIM CORNER BREAK: .001 / .010 SURFACE FINISH: 125 µIN 		DENSITY: 0.037 LBM/CU IN MASS: 0.036 LBM SURF AREA: 20.301 SQ IN VOLUME: 0.968 CU IN		TITLE: FITTING, QD - 1 IN 90 DEG HOSE PART NO: 211-0119 DRAWING NO: SALES_211-0119	
				REV: 1 SHEET: 1 OF 1	

4

3

2

1

B

B

A

A