

4

3

2

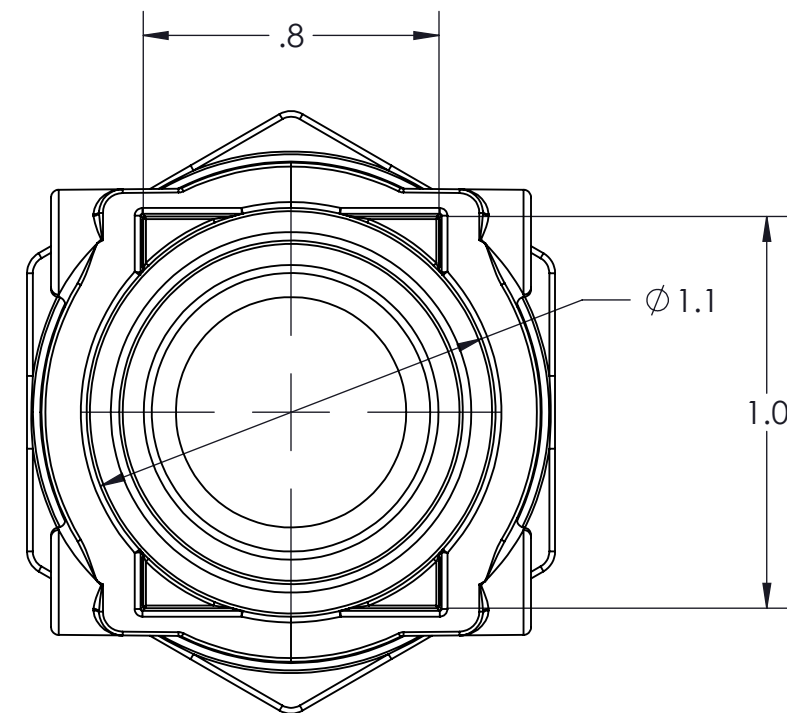
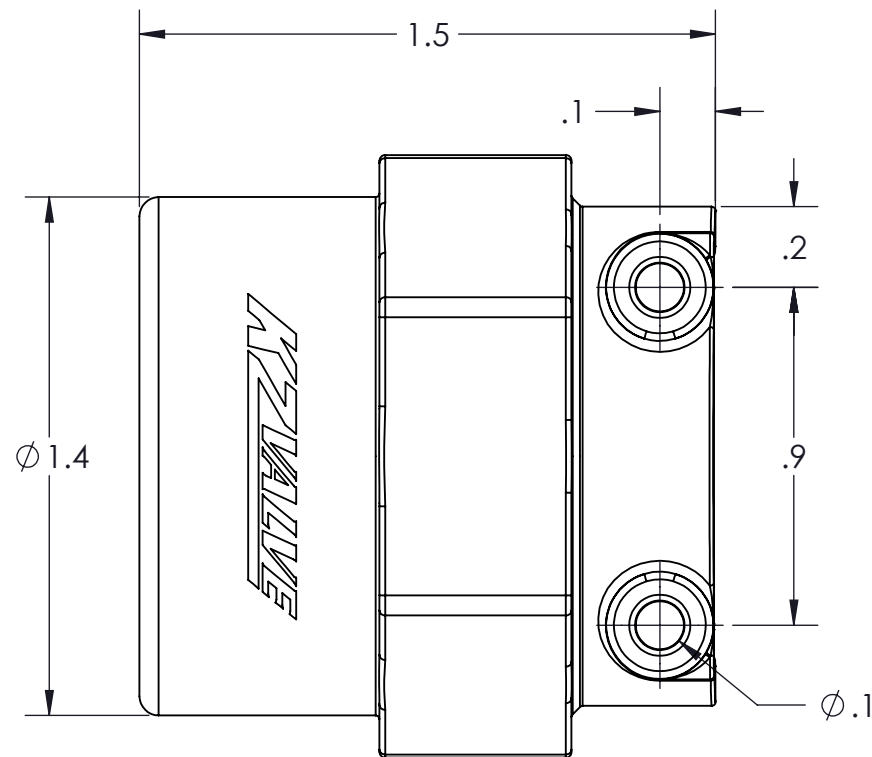
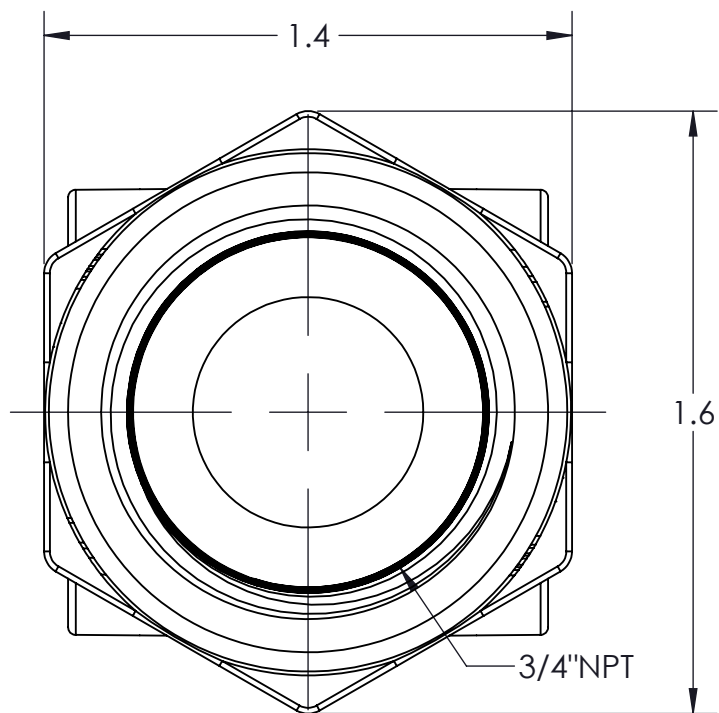
1

CONFIDENTIAL AND PROPRIETARY TO KZCO, INC. UNAUTHORIZED USE, DISCLOSURE OF REPRODUCTION IS PROHIBITED

FOR MORE DETAILS AND INFORMATION, CONTACT: SALES@KZCO.COM

B

B



A

A

4

3

2

1

CONFORMS TO ASME STANDARDS Y14.5-2009

-STANDARD TOLERANCES- -ALL DIMENSIONS IN INCHES [mm]-	
.X±0.1	TOTAL RUNOUT: .005 FIM CORNER BREAK: .001/.010 SURFACE FINISH: 125 µIN
.XX±0.001	
.XXX±0.005	
.XX°±1°	
DENSITY: 0.036 LBM/CU IN MASS: 0.041 LBM SURF AREA: 15.820 SQ IN VOLUME: 1.140 CU IN	

DESIGNED BY:
DRAWN BY:
APPROVED:
SCALE: 2:1
SIZE: B
MATERIAL: POLY_PRO_30GF_SPEC_W-751001

		23860 KZ PARKWAY GREENWOOD, NE 68366 USA PHONE: +1.402.944.2767 FAX: +1.402.944.2402	
		TITLE: FITTING, QD X NPT, 3/4", POLY_PRO_30GF_SPEC_W-751001	
PART NO: 211-0017	REV: 1		
DRAWING NO: SALES_211-0017	SHEET: 1 OF 1		