

4

3

2

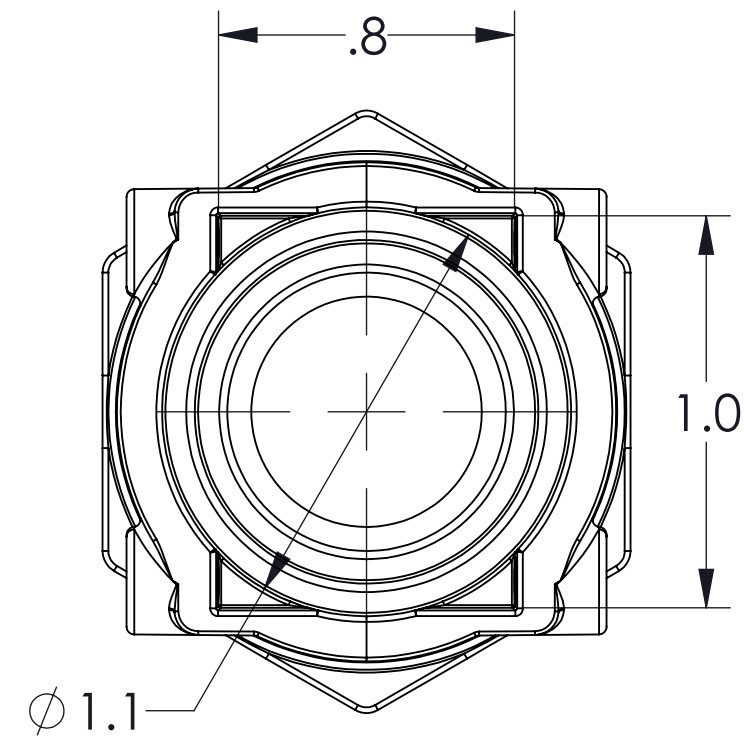
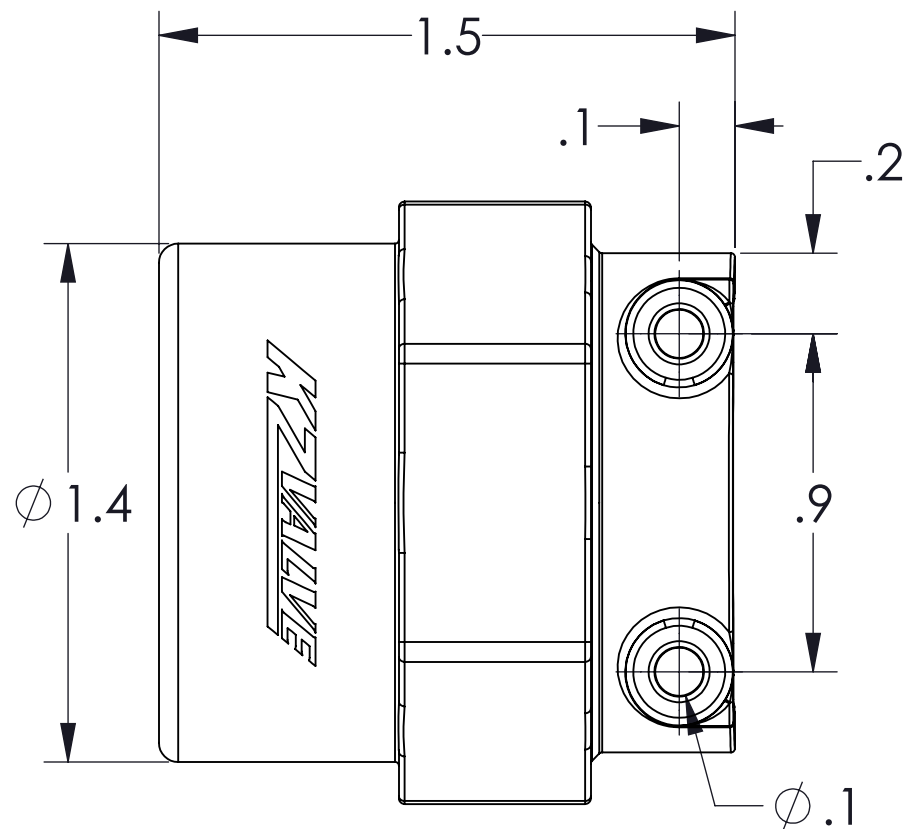
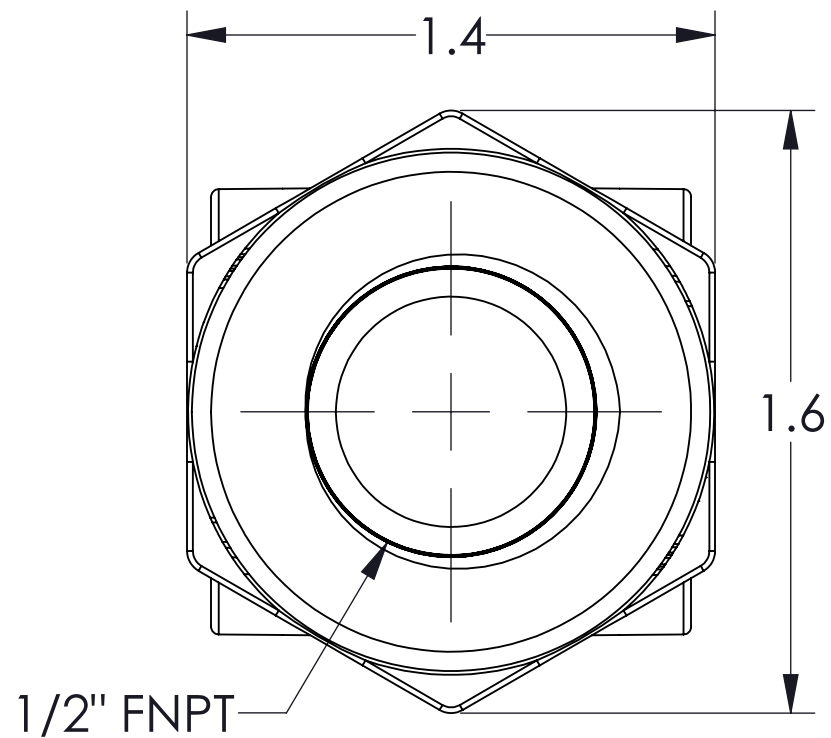
1

CONFIDENTIAL AND PROPRIETARY TO KZCO, INC. UNAUTHORIZED USE, DISCLOSURE OF REPRODUCTION IS PROHIBITED

FOR MORE DETAILS AND INFORMATION, CONTACT: SALES@KZCO.COM

B

B



A

A

4

3

2

1

CONFORMS TO ASME STANDARDS Y14.5-2009

-STANDARD TOLERANCES- -ALL DIMENSIONS IN INCHES [mm]- .X±0.1 .XX±0.001 .XXX±0.005 .X°±1°	TOTAL RUNOUT: .005 FIM CORNER BREAK: .001/.010 SURFACE FINISH: 125 μIN 	DESIGNED BY: Brian Pham		23860 KZ PARKWAY GREENWOOD, NE 68366 USA PHONE: +1.402.944.2767 FAX: +1.402.944.2402
		DRAWN BY: Aaron Goodwin		
DENSITY: 0.037 LBM/CU IN MASS: 0.049 LBM SURF AREA: 14.957 SQ IN VOLUME: 1.331 CU IN		APPROVED:	TITLE: FITTING, TX QC X 1/2" FNPT	
		SCALE: 2:1	SIZE: B	PART NO: 211-0224
		MATERIAL: Polypropylene_30_GF	DRAWING NO: SALES_211-0224	SHEET: 1 OF 1