

4

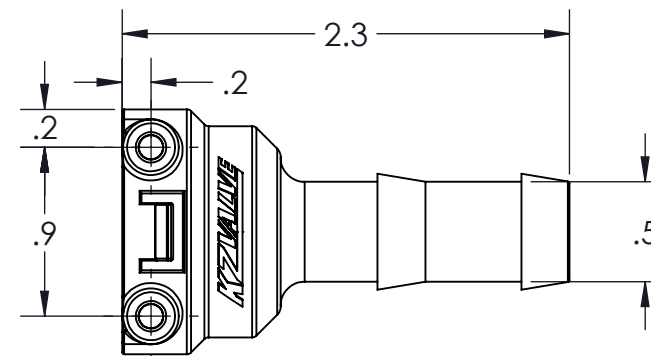
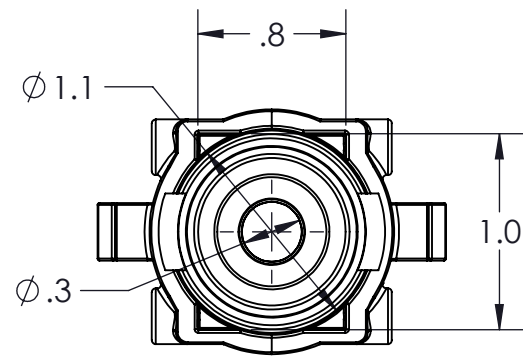
3

2

1

CONFIDENTIAL AND PROPRIETARY TO KZCO, INC. UNAUTHORIZED USE, DISCLOSURE OF REPRODUCTION IS PROHIBITED

FOR MORE DETAILS AND INFORMATION, CONTACT: SALES@KZCO.COM



CONFORMS TO ASME STANDARDS Y14.5-2009

-STANDARD TOLERANCES- -ALL DIMENSIONS IN INCHES [mm]- .X $\pm$ 0.1 .XX $\pm$ 0.001 .XXX $\pm$ 0.005 .X $^{\circ}$ $\pm$ 1 $^{\circ}$	TOTAL RUNOUT: .005 FIM CORNER BREAK: .001/.010 SURFACE FINISH: 125 $\mu$ IN 	DESIGNED BY: Larry Erdkamp		23860 KZ PARKWAY GREENWOOD, NE 68366 USA PHONE: +1.402.944.2767 FAX: +1.402.944.2402
		DRAWN BY: Aaron Goodwin		
DENSITY: 0.037 LBM/CU IN MASS: 0.021 LBM SURF AREA: 12.431 SQ IN VOLUME: 0.565 CU IN		APPROVED:	PART NO: 211-0227 DRAWING NO: SALES_211-0227	REV: 1
		SCALE: 1:1		SHEET: 1 OF 1
		SIZE: B		
		MATERIAL: Polypropylene, 30% GF, Black		

4

3

2

1

B

B

A

A