

4

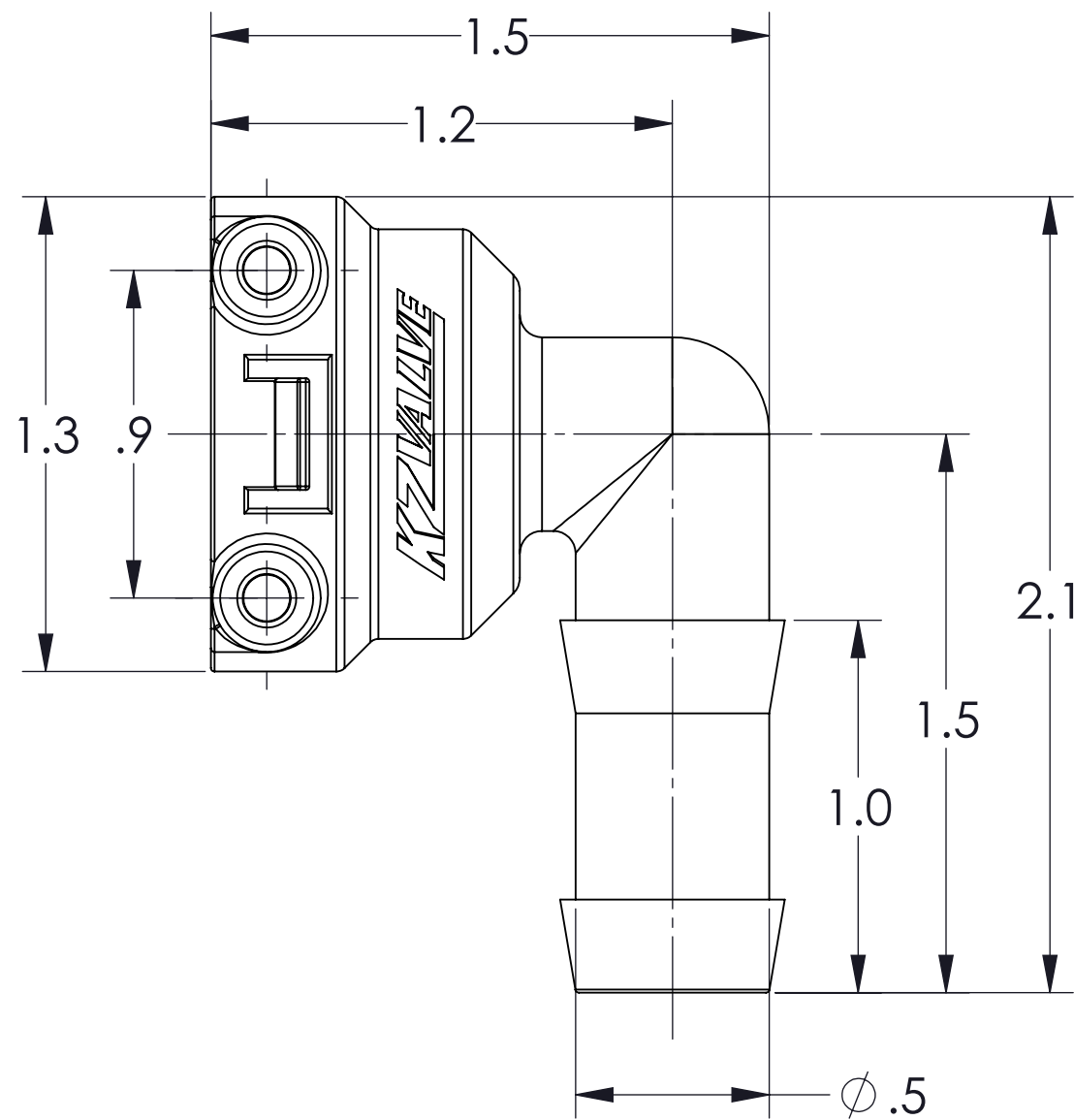
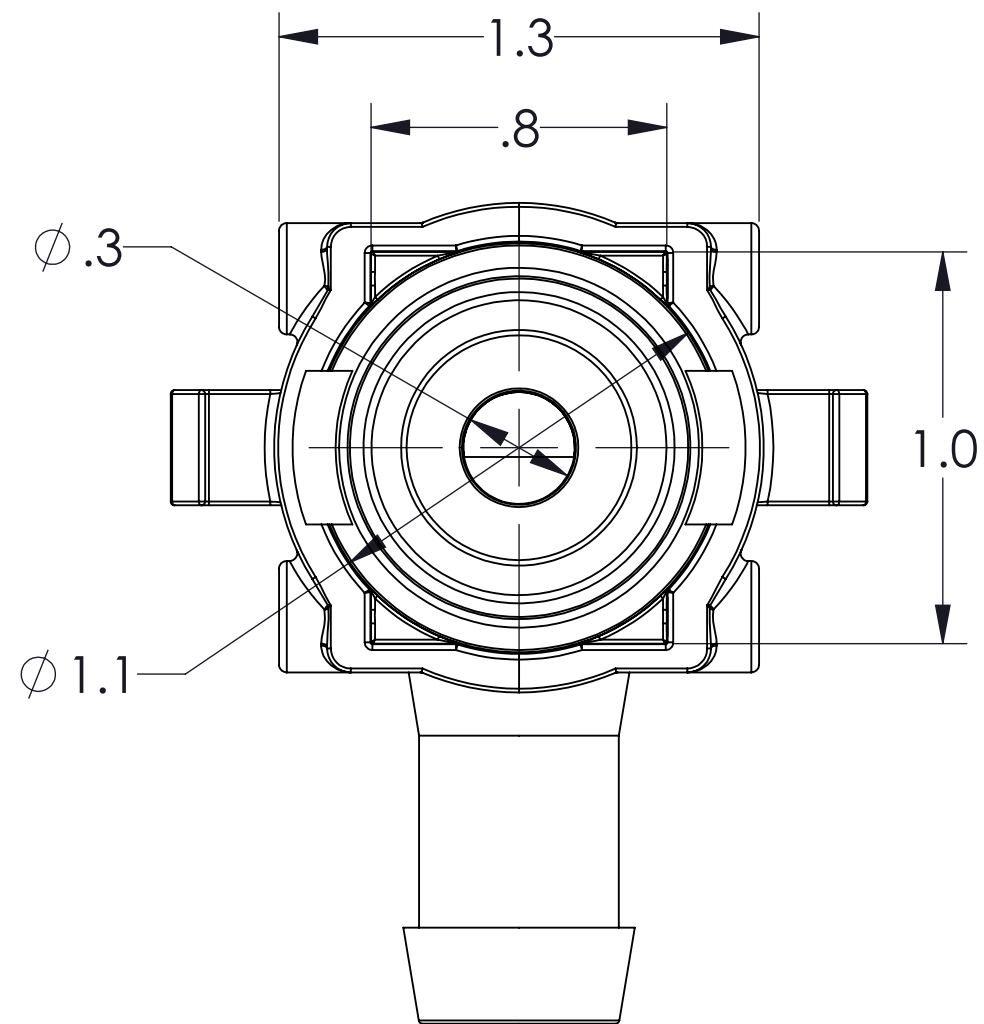
3

2

1

CONFIDENTIAL AND PROPRIETARY TO KZCO, INC. UNAUTHORIZED USE, DISCLOSURE OF REPRODUCTION IS PROHIBITED

FOR MORE DETAILS AND INFORMATION, CONTACT: SALES@KZCO.COM



B

B

A

A

4

3

2

1

CONFORMS TO ASME STANDARDS Y14.5-2009

-STANDARD TOLERANCES- -ALL DIMENSIONS IN INCHES [mm]- .X±0.1 .XX±0.01 .XXX±0.005 .X°±1°		DESIGNED BY: Larry Erdkamp DRAWN BY: Aaron Goodwin APPROVED: SCALE: 2:1 SIZE: B MATERIAL: Polypropylene, 30% GF, Black	 23860 KZ PARKWAY GREENWOOD, NE 68366 USA PHONE: +1.402.944.2767 FAX: +1.402.944.2402	
TOTAL RUNOUT: .005 FIM CORNER BREAK: .001 / .010 SURFACE FINISH: 125 µIN 		TITLE: FITTING, QD-1/2", STRAIGHT HOSE PART NO: 211-0227 DRAWING NO: SALES_211-0228		
DENSITY: 0.037 LBM/CU IN MASS: 0.024 LBM SURF AREA: 13.321 SQ IN VOLUME: 0.655 CU IN		REV: 1 SHEET: 1 OF 1		