

4

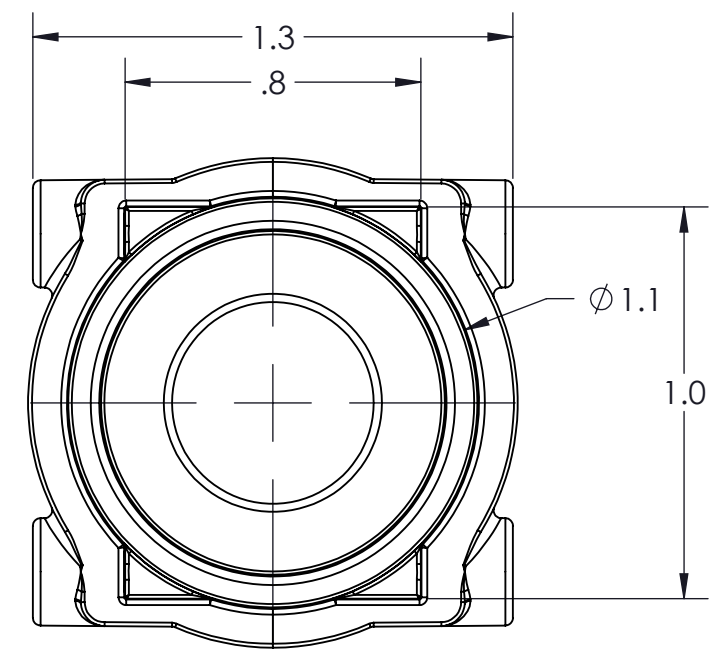
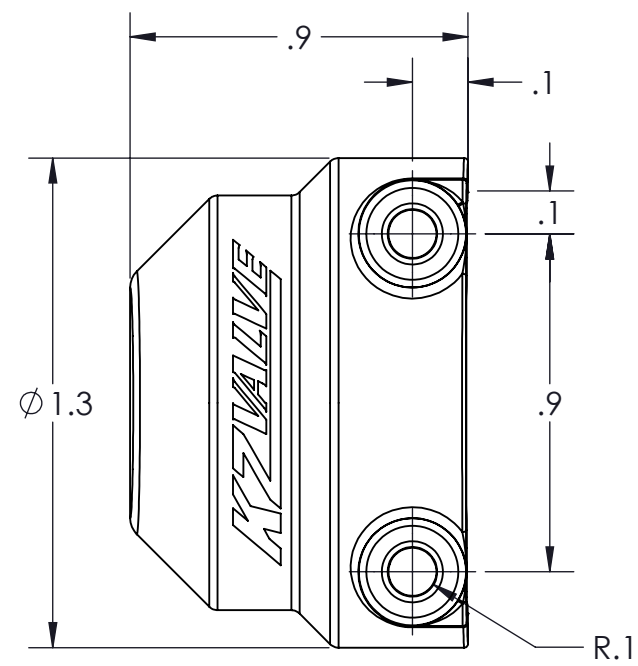
3

2

1

CONFIDENTIAL AND PROPRIETARY TO KZCO, INC. UNAUTHORIZED USE, DISCLOSURE OF REPRODUCTION IS PROHIBITED

FOR MORE DETAILS AND INFORMATION, CONTACT: SALES@KZCO.COM



CONFORMS TO ASME STANDARDS Y14.5-2009

-STANDARD TOLERANCES- -ALL DIMENSIONS IN INCHES [mm]- .X \pm 0.1 .XX \pm 0.001 .XXX \pm 0.005 .X $^{\circ}$ \pm 1 $^{\circ}$	TOTAL RUNOUT: .005 FIM CORNER BREAK: .001/.010 SURFACE FINISH: 125 μ IN 	DESIGNED BY: Larry Erdkamp		23860 KZ PARKWAY GREENWOOD, NE 68366 USA PHONE: +1.402.944.2767 FAX: +1.402.944.2402
		DRAWN BY: Jackson Fairchild		
DENSITY: 0.036 LBM/CU IN MASS: 0.013 LBM SURF AREA: 8.017 SQ IN VOLUME: 0.346 CU IN		APPROVED:	TITLE: FITTING, QD 1/2" FEMALE BLANK CAP	
		SCALE: 2:1	PART NO: 211-0062	REV: 1
		SIZE: B	DRAWING NO: SALES_211-0062	SHEET: 1 OF 1
		MATERIAL: POLY_PRO_30GF_SPEC_W-751001		

4

3

2

1

B

B

A

A