

4

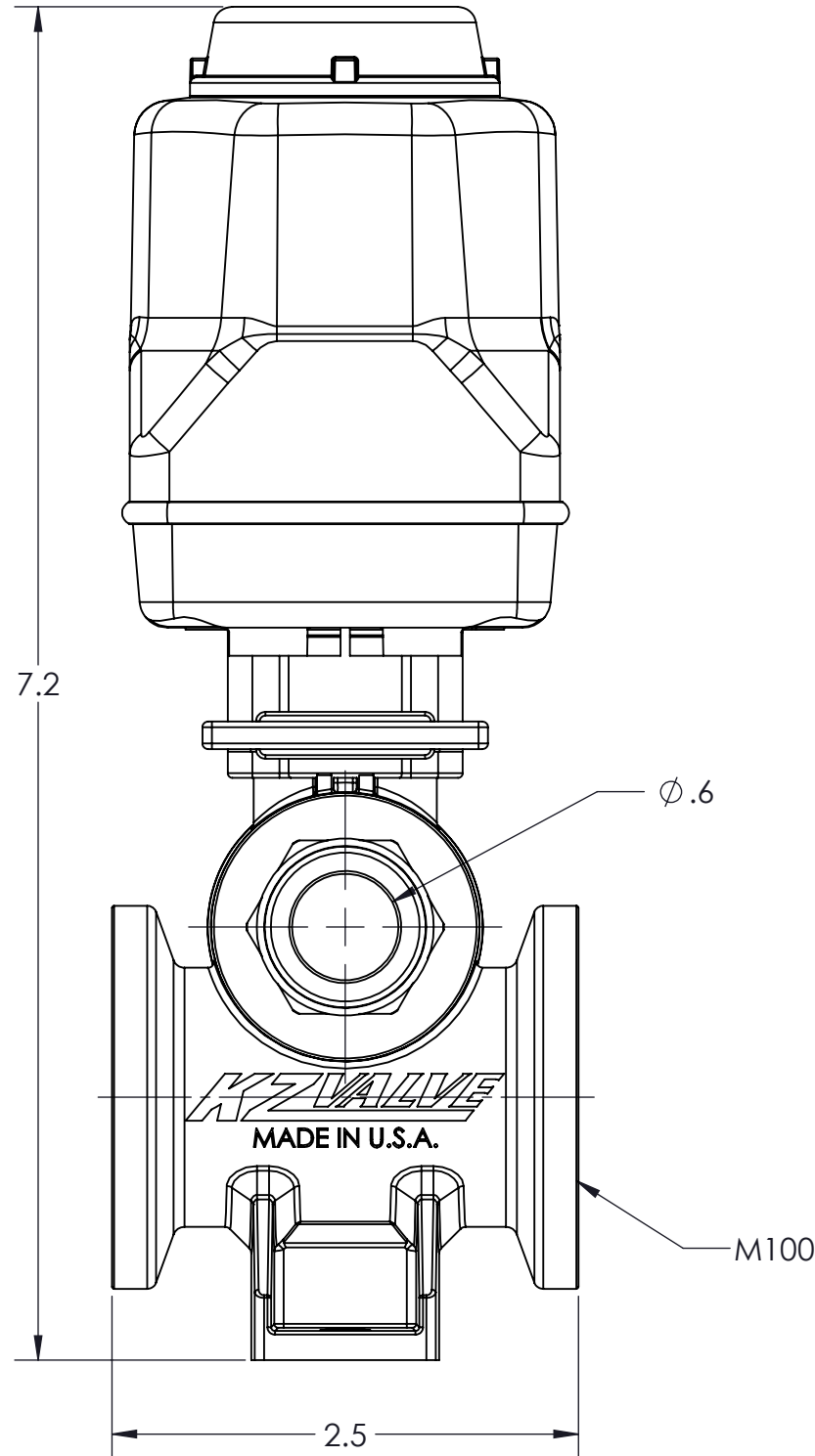
3

2

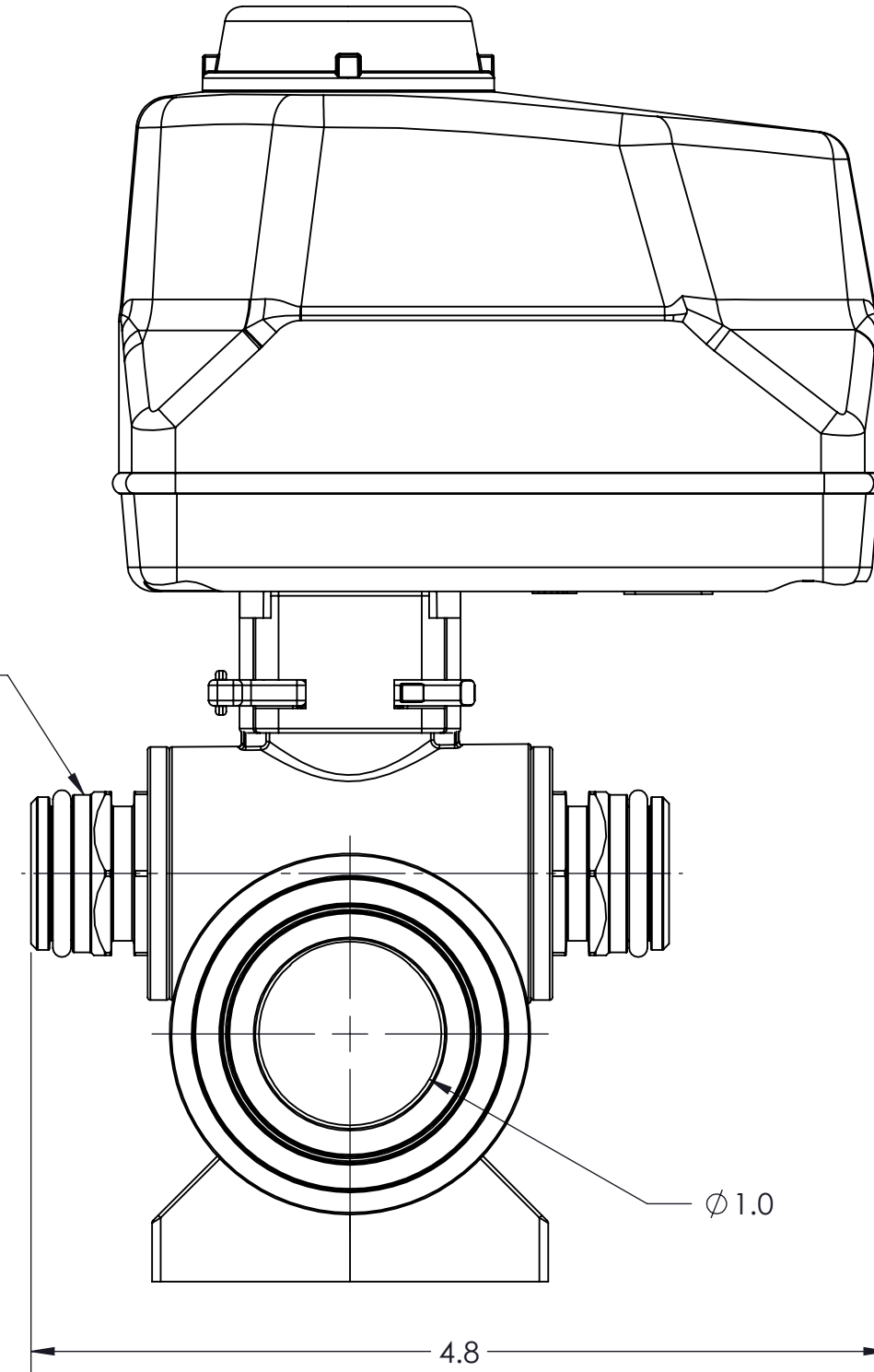
1

CONFIDENTIAL AND PROPRIETARY TO KZCO, INC. UNAUTHORIZED USE, DISCLOSURE OF REPRODUCTION IS PROHIBITED

FOR MORE DETAILS AND INFORMATION, CONTACT: SALES@KZCO.COM



QUICK DISCONNECT



-STANDARD TOLERANCES- -ALL DIMENSIONS IN INCHES [mm]- .X±0.1 .XX±0.01 .XXX±0.005 .X°±1°	TOTAL RUNOUT: .005 FIM CORNER BREAK: .001/.010 SURFACE FINISH: 125 µIN 	DESIGNED BY: Nathaniel Rasmussen		23860 KZ PARKWAY GREENWOOD, NE 68366 USA PHONE: +1.402.944.2767 FAX: +1.402.944.2402
		DRAWN BY: Jason Moran		
DENSITY: 0.051 LBM/CU IN MASS: 1.024 LBM SURF AREA: 348.598 SQ IN VOLUME: 20.048 CU IN		APPROVED:	TITLE: ACTUATED VALVE, EH7, 1/2" BL MNFD DIV, 0.8S@12VDC	
CONFORMS TO ASME STANDARDS Y14.5-2009		SCALE: 1:1	PART NO: 21CA7-10DK0-P31	REV: 1
		SIZE: B	DRAWING NO: SALES_21CA7-10DK0-P31	SHEET: 1 OF 2
		MATERIAL: Material <not specified>		

4

3

2

1

B

B

A

A