

4

3

2

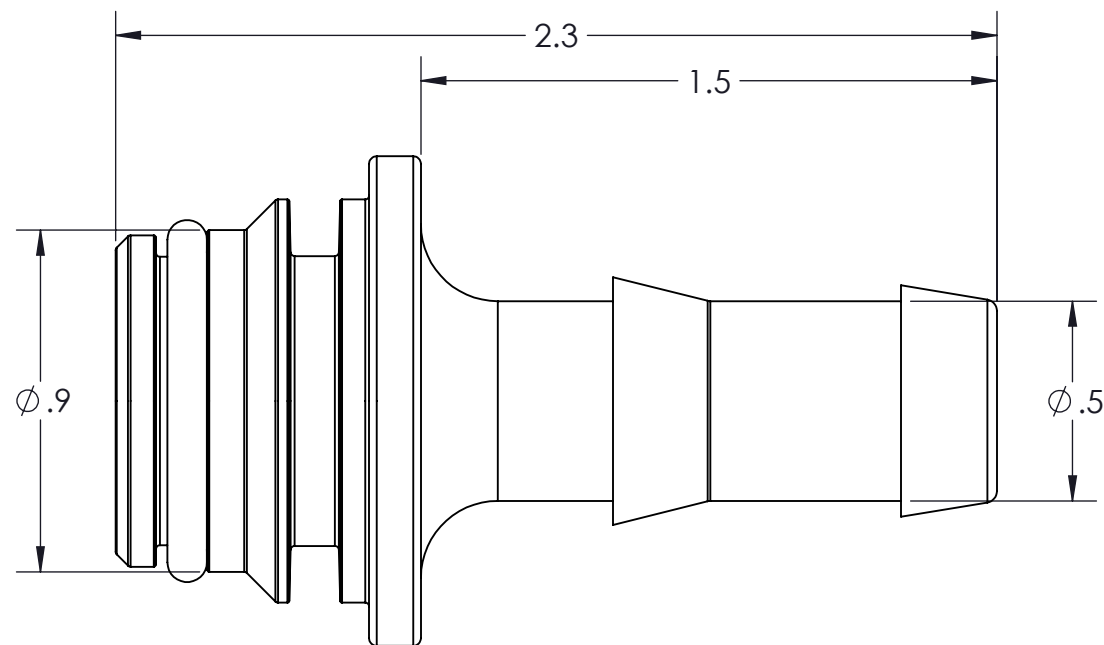
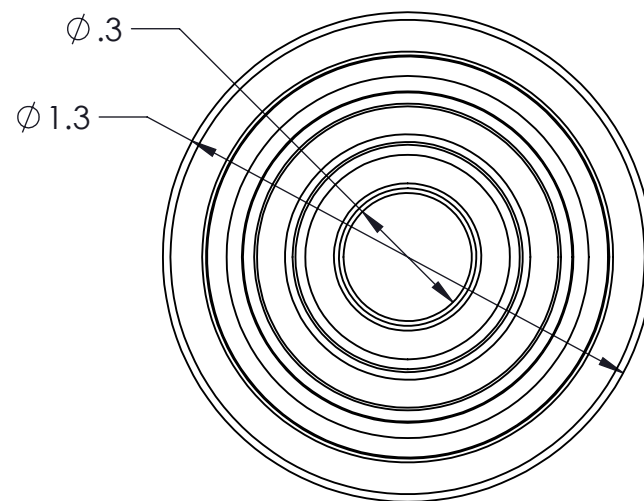
1

CONFIDENTIAL AND PROPRIETARY TO KZCO, INC. UNAUTHORIZED USE, DISCLOSURE OF REPRODUCTION IS PROHIBITED

FOR MORE DETAILS AND INFORMATION, CONTACT: SALES@KZCO.COM

B

B



A

A

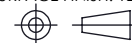
4

3

2

1

CONFORMS TO ASME STANDARDS Y14.5-2009

-STANDARD TOLERANCES- -ALL DIMENSIONS IN INCHES [mm]-	
.X±0.1	TOTAL RUNOUT: .005 FIM CORNER BREAK: .001/.010 SURFACE FINISH: 125 µIN
.XX±0.001	
.XXX±0.005	
.XX°±1°	
	
DENSITY: 0.038 LBM/CU IN MASS: 0.023 LBM SURF AREA: 11.759 SQ IN VOLUME: 0.608 CU IN	

DESIGNED BY: Evan Schwahn
DRAWN BY: Aaron Goodwin
APPROVED:
SCALE: 2:1
SIZE: B
MATERIAL: AS NOTED

KZCO inc.		23860 KZ PARKWAY GREENWOOD, NE 68366 USA PHONE: +1.402.944.2767 FAX: +1.402.944.2402	
TITLE: FITTING ASSY, QD MALE X 1/2" HB, 211-0236 W/O-RING			
PART NO: 412-0002		REV: 1	
DRAWING NO: SALES_412-0002		SHEET: 1 OF 1	