

4

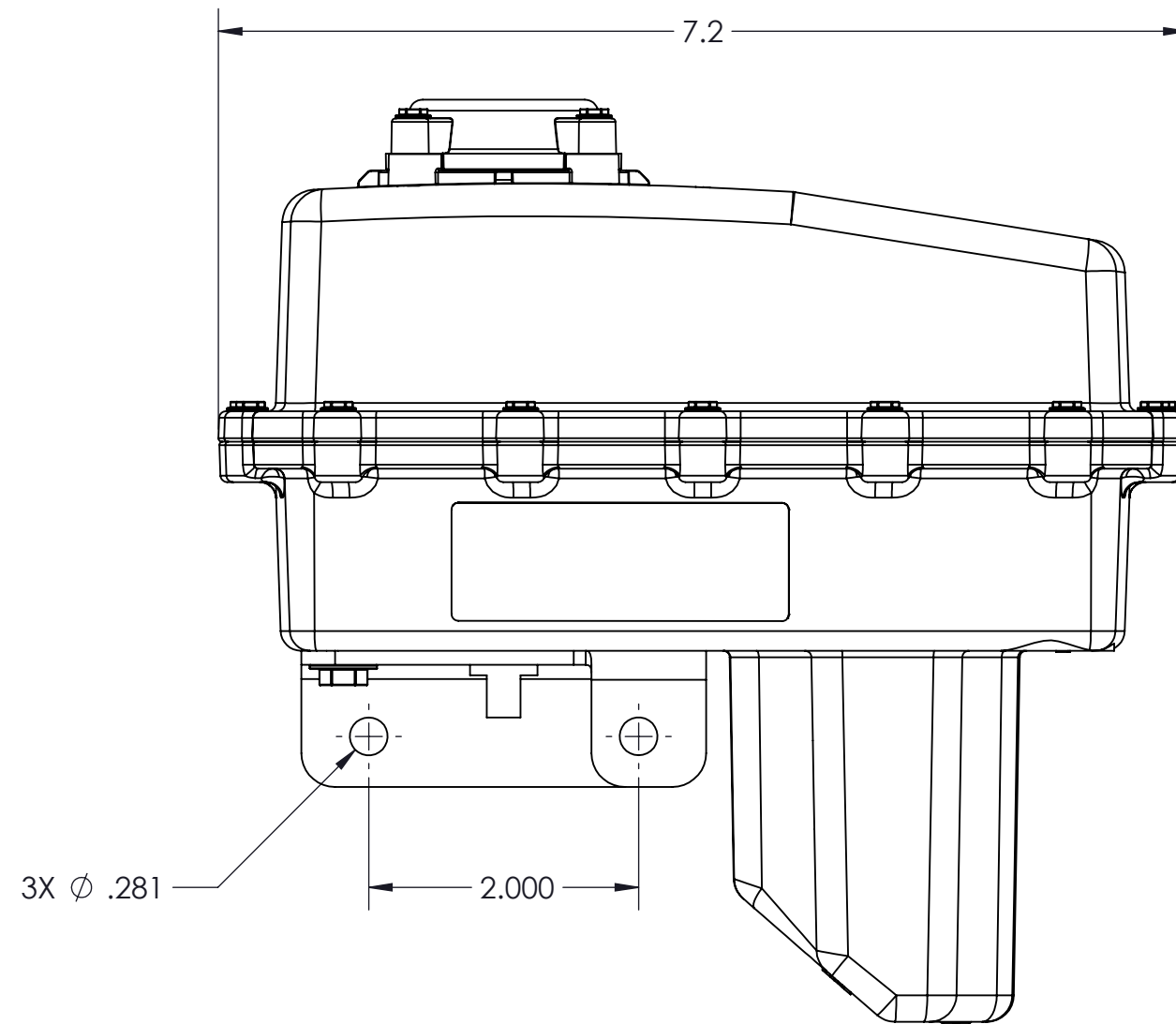
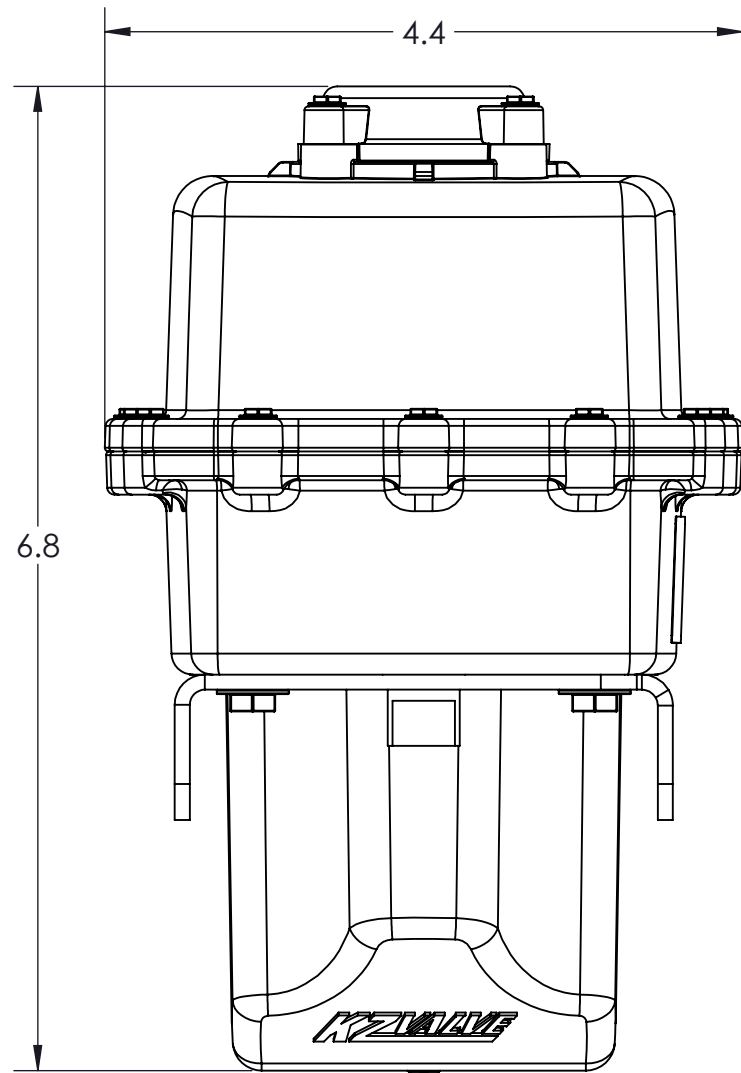
3

2

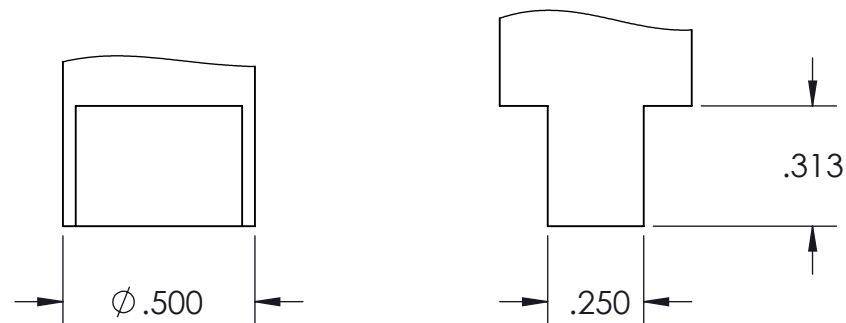
1

CONFIDENTIAL AND PROPRIETARY TO KZCO, INC. UNAUTHORIZED USE, DISCLOSURE OF REPRODUCTION IS PROHIBITED

FOR MORE DETAILS AND INFORMATION, CONTACT: SALES@KZCO.COM



OUTPUT SHAFT DETAIL



-STANDARD TOLERANCES- -ALL DIMENSIONS IN INCHES [mm]-	
.X±0.1	TOTAL RUNOUT: .005 FIM
.XX±0.01	CORNER BREAK: .001/.010
.XXX±0.005	SURFACE FINISH: 125 µIN
.XX°±1°	
DENSITY: 0.051 LBM/CU IN MASS: 1.993 LBM SURF AREA: 508.727 SQ IN VOLUME: 39.085 CU IN	

DESIGNED BY: Lindsey Niemann
DRAWN BY: Jason Moran
APPROVED:
SCALE: 3:4
SIZE: B
MATERIAL: AS NOTED

		23860 KZ PARKWAY GREENWOOD, NE 68366 USA PHONE: +1.402.944.2767 FAX: +1.402.944.2402
TITLE: ACTUATOR, EH22, 1.5S@12VDC		
PART NO: 10DY0-PF1	REV: 1	
DRAWING NO: SALES_10DY0-PF1	SHEET: 1 OF 2	

CONFORMS TO ASME STANDARDS Y14.5-2009

4

3

2

1

B

B

A

A