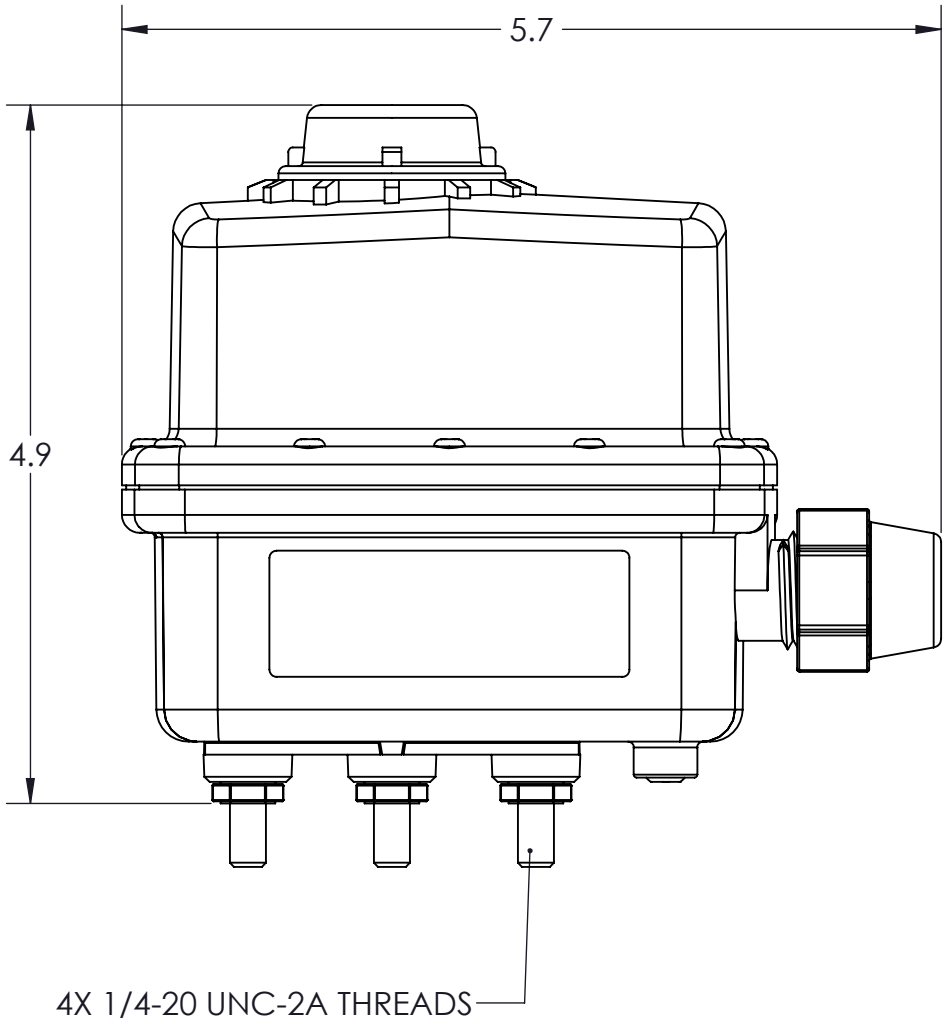
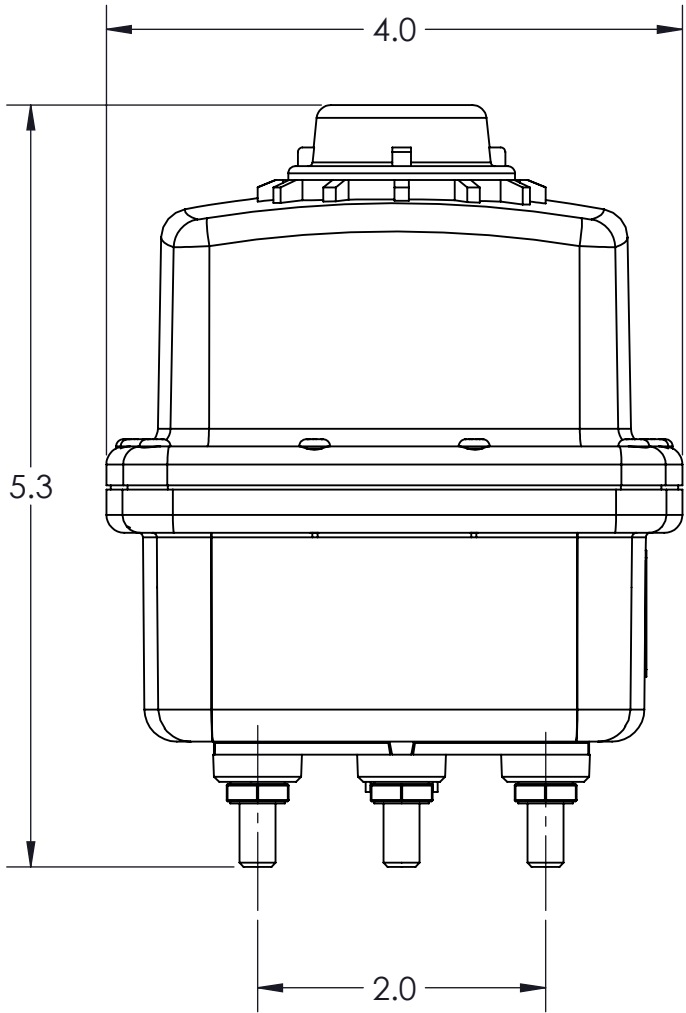
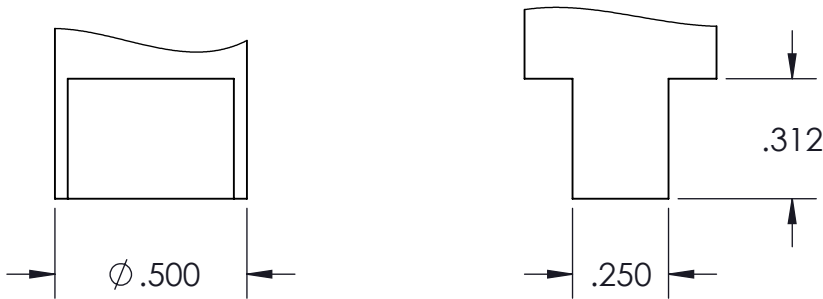


FOR MORE DETAILS AND INFORMATION, CONTACT: SALES@KZCO.COM



OUTPUT SHAFT DETAIL



CONFORMS TO ASME
STANDARDS Y14.5-2009

-STANDARD TOLERANCES- -ALL DIMENSIONS IN INCHES [mm]-		DESIGNED BY: Lindsey Niemann		<div><div>23860 KZ PARKWAY GREENWOOD, NE 68366 USA PHONE: +1.402.944.2767 FAX: +1.402.944.2402</div></div>	
.X±0.1 .XX±0.01 .XXX±0.005 .XX°±1°	TOTAL RUNOUT: .005 FIM CORNER BREAK: .001/.010 SURFACE FINISH: 125 µIN 	DRAWN BY: Jason Moran			
DENSITY: 0.068 LBM/CU IN MASS: 1.731 LBM SURF AREA: 368.600 SQ IN VOLUME: 25.552 CU IN		APPROVED:		TITLE: ACTUATOR, EH3, 0.8S@12VDC, ON-OFF	
		SCALE: 3:4		PART NO: 10D20-P01 REV: 1	
		SIZE: B		DRAWING NO: 10D20-P01 SHEET: 1 OF 1	
		MATERIAL: AS NOTED			