

4

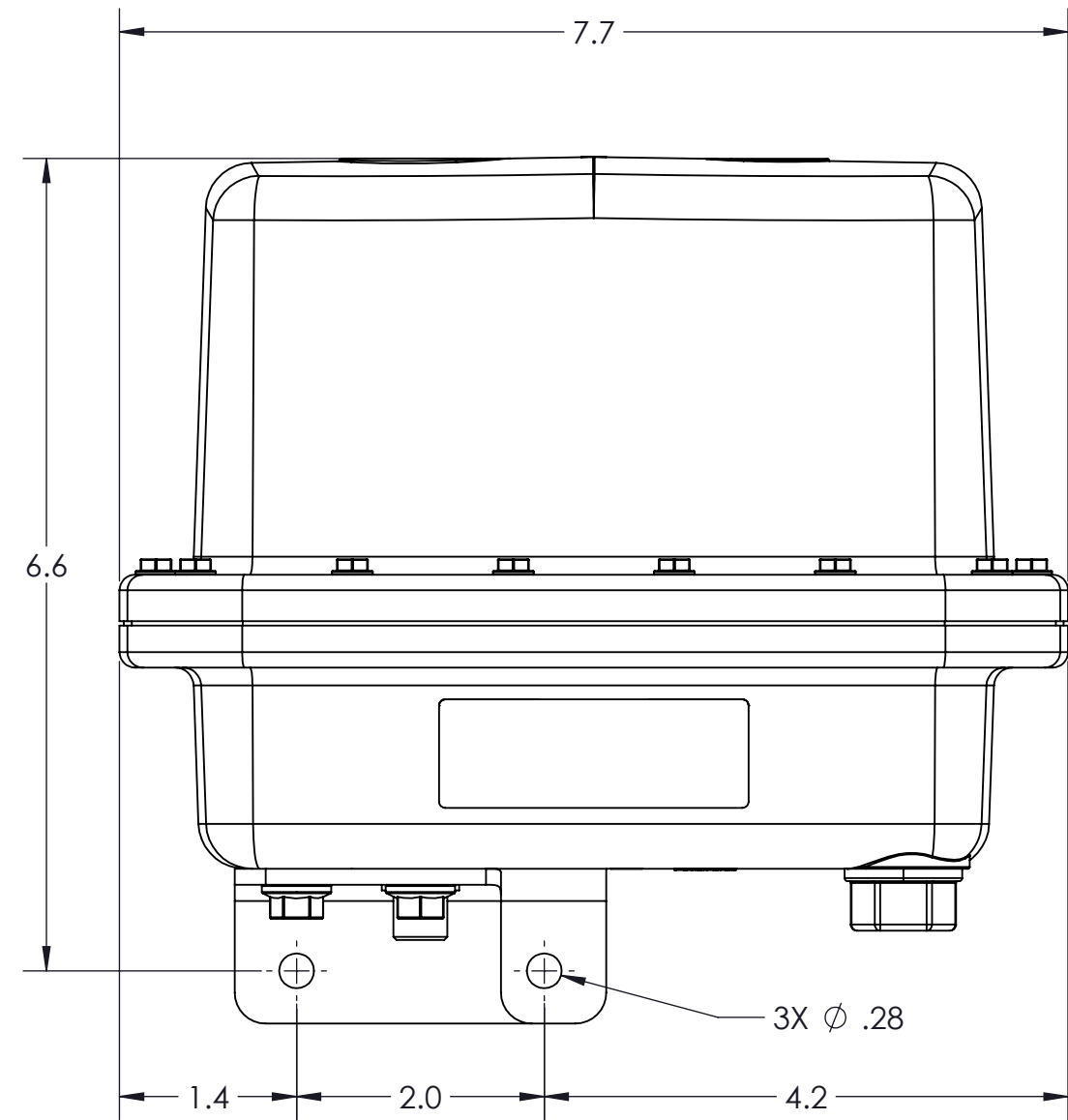
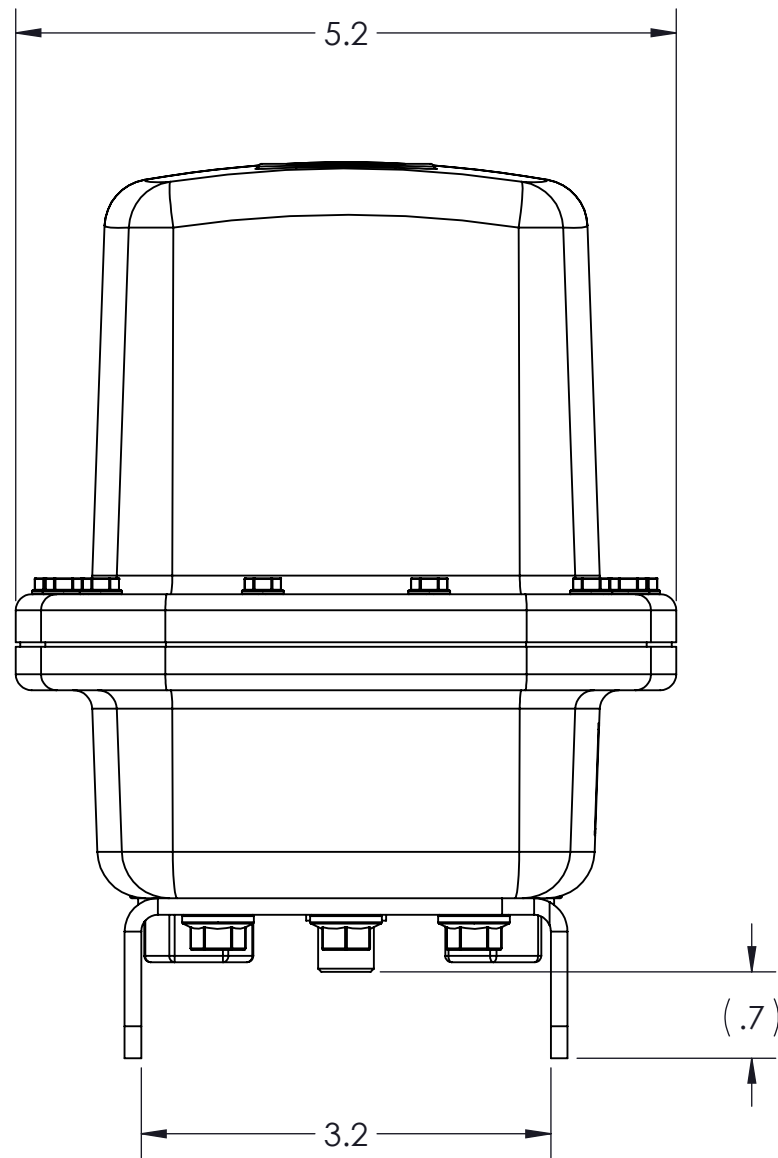
3

2

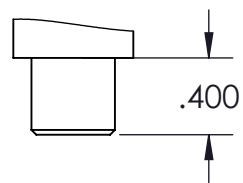
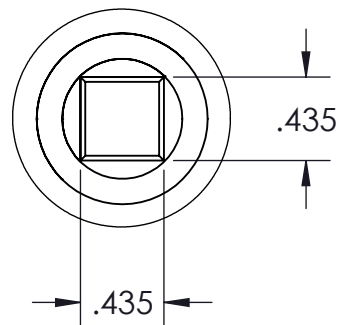
1

CONFIDENTIAL AND PROPRIETARY TO KZCO, INC. UNAUTHORIZED USE, DISCLOSURE OF REPRODUCTION IS PROHIBITED

FOR MORE DETAILS AND INFORMATION, CONTACT: SALES@KZCO.COM



OUTPUT SHAFT DETAIL



-STANDARD TOLERANCES- -ALL DIMENSIONS IN INCHES [mm]-	
.X±0.1	TOTAL RUNOUT: .005 FIM
.XX±0.01	CORNER BREAK: .001/.010
.XXX±0.005	SURFACE FINISH: 125 µIN
.XX°±1°	
DENSITY: 6879.681 LBM/CU IN MASS: 391.624.937 LBM SURF AREA: 619.605 SQ IN VOLUME: 56.925 CU IN	

CONFORMS TO ASME STANDARDS Y14.5-2009

DESIGNED BY: Adam Kottas  
 DRAWN BY: Jason Moran  
 APPROVED:  
 SCALE: 2:3  
 SIZE: B  
 MATERIAL: AS NOTED



23860 KZ PARKWAY  
 GREENWOOD, NE 68366 USA  
 PHONE: +1.402.944.2767  
 FAX: +1.402.944.2402

TITLE: ACTUATOR, EH5, 3S@12VDC, ON-OFF

PART NO: 10D50-DB1

REV: 1

DRAWING NO: SALES\_10D50-DB1

SHEET: 1 OF 1

4

3

2

1

B

B

A

A