

4

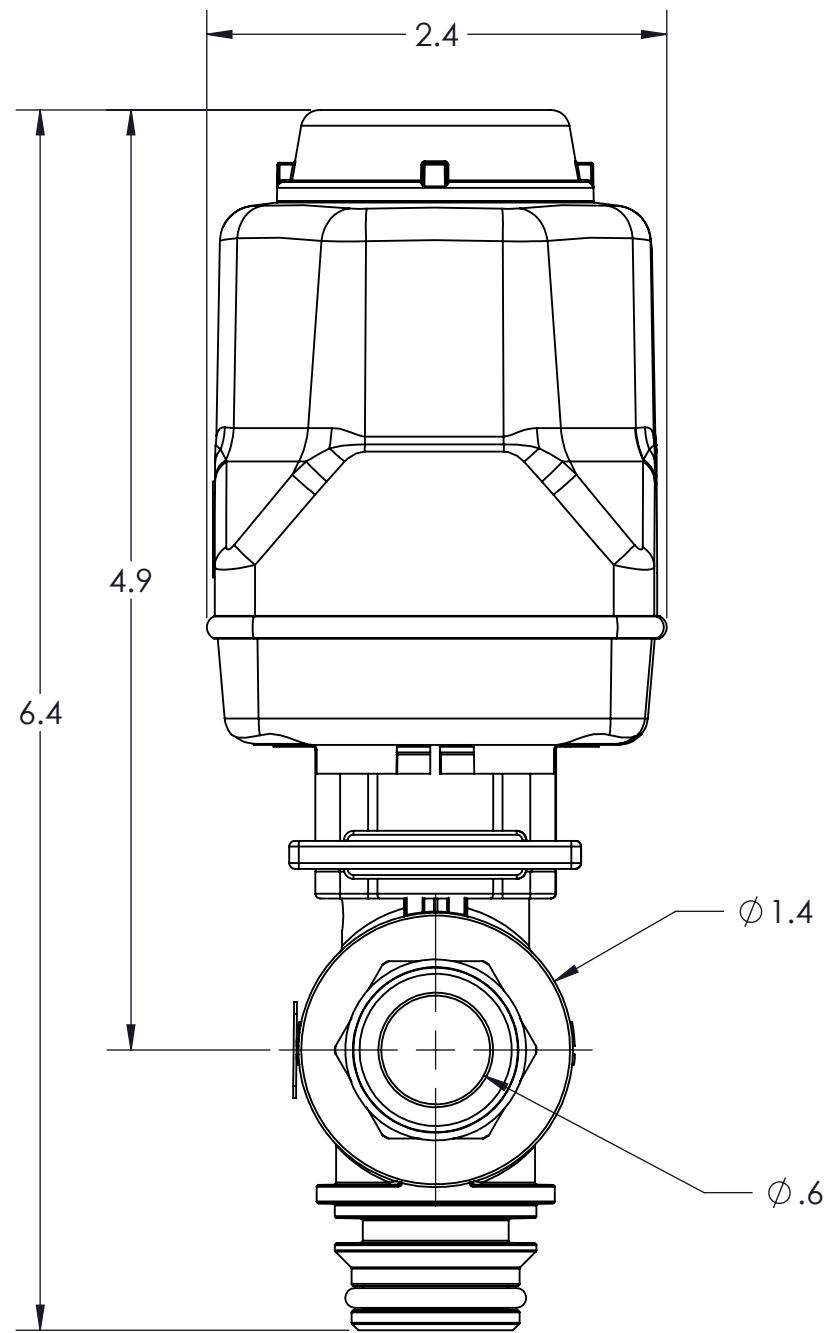
3

2

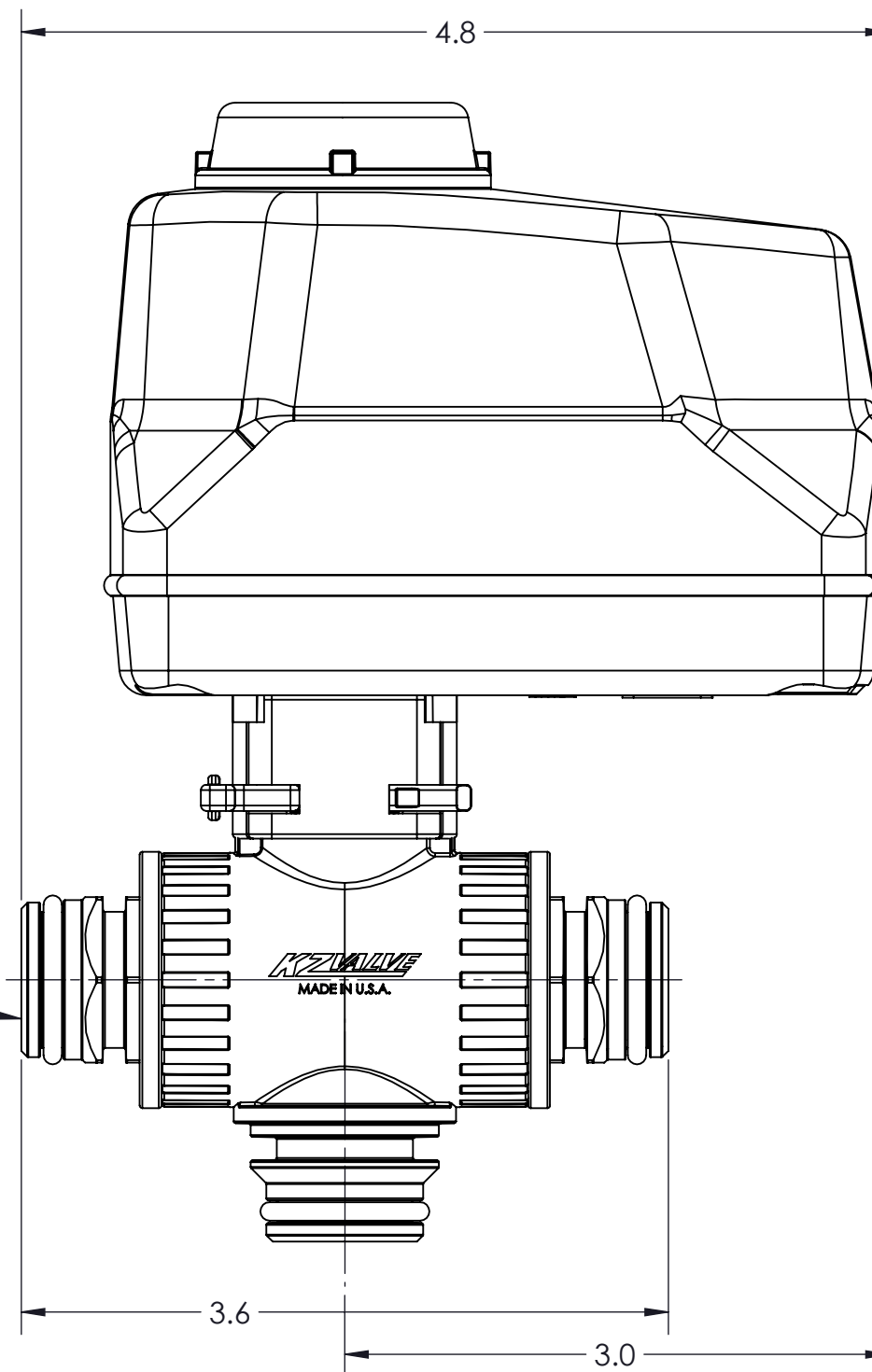
1

CONFIDENTIAL AND PROPRIETARY TO KZCO, INC. UNAUTHORIZED USE, DISCLOSURE OF REPRODUCTION IS PROHIBITED

FOR MORE DETAILS AND INFORMATION, CONTACT: SALES@KZCO.COM



QUICK DISCONNECT  
3 PLACES



-STANDARD TOLERANCES- -ALL DIMENSIONS IN INCHES [mm]-	
.X±0.1	TOTAL RUNOUT: .005 FIM
.XX±0.001	CORNER BREAK: .001/.010
.XXX±0.005	SURFACE FINISH: 125 µIN
.XX°±1°	
DENSITY: 0.053 LBM/CU IN MASS: 0.934 LBM SURF AREA: 323.732 SQ IN VOLUME: 17.587 CU IN	

DESIGNED BY: Nathaniel Rasmussen
DRAWN BY: Jason Moran
APPROVED:
SCALE: 1:1
SIZE: B
MATERIAL: Material <not specified>

		23860 KZ PARKWAY GREENWOOD, NE 68366 USA PHONE: +1.402.944.2767 FAX: +1.402.944.2402	
TITLE: ACTUATED VALVE, EH7, 1/2" BL 3 WAY DIVERter, 0.8S@12VDC			
PART NO: H7D37-10DK0-P31		REV: 1	
DRAWING NO: SALES_H7D37-10DK0-P31		SHEET: 1 OF 1	

CONFORMS TO ASME  
STANDARDS Y14.5-2009

4

3

2

1

B

B

A

A