

4

3

2

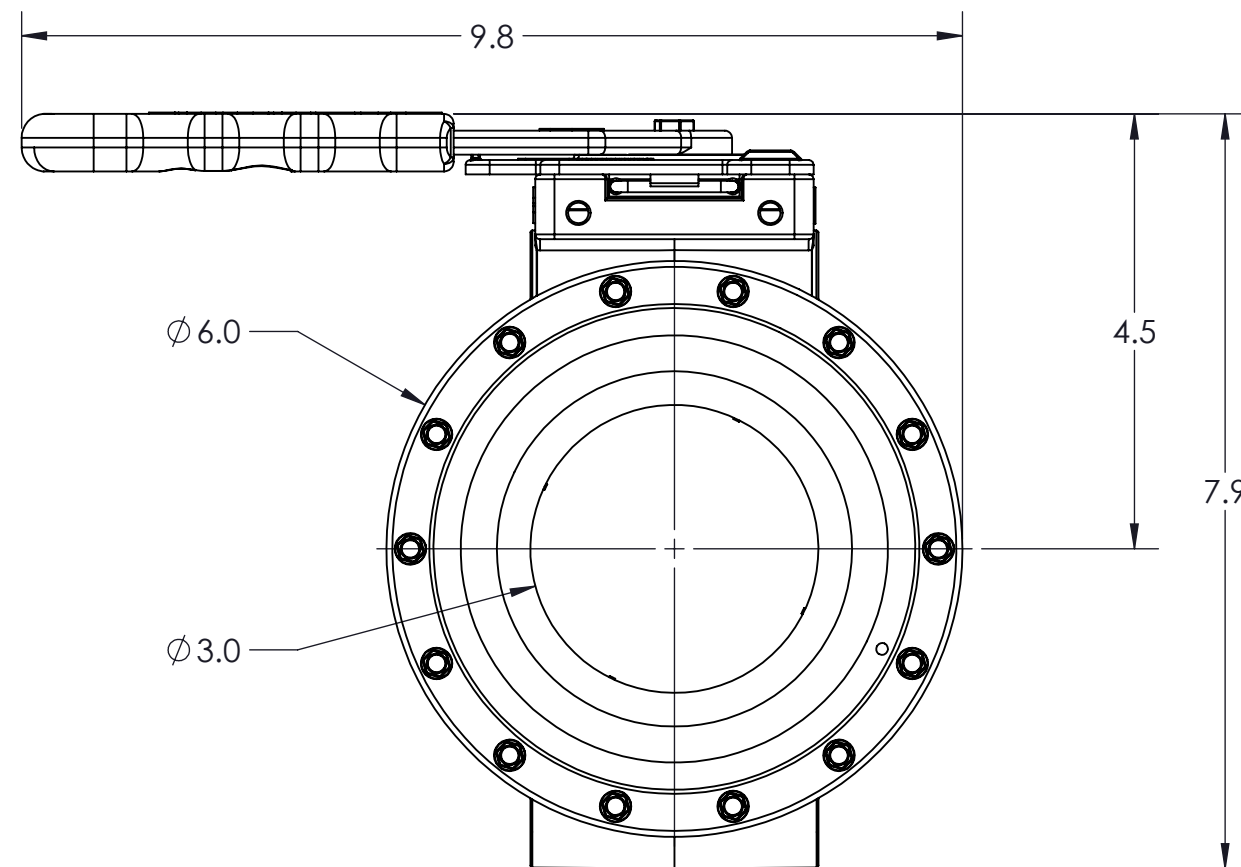
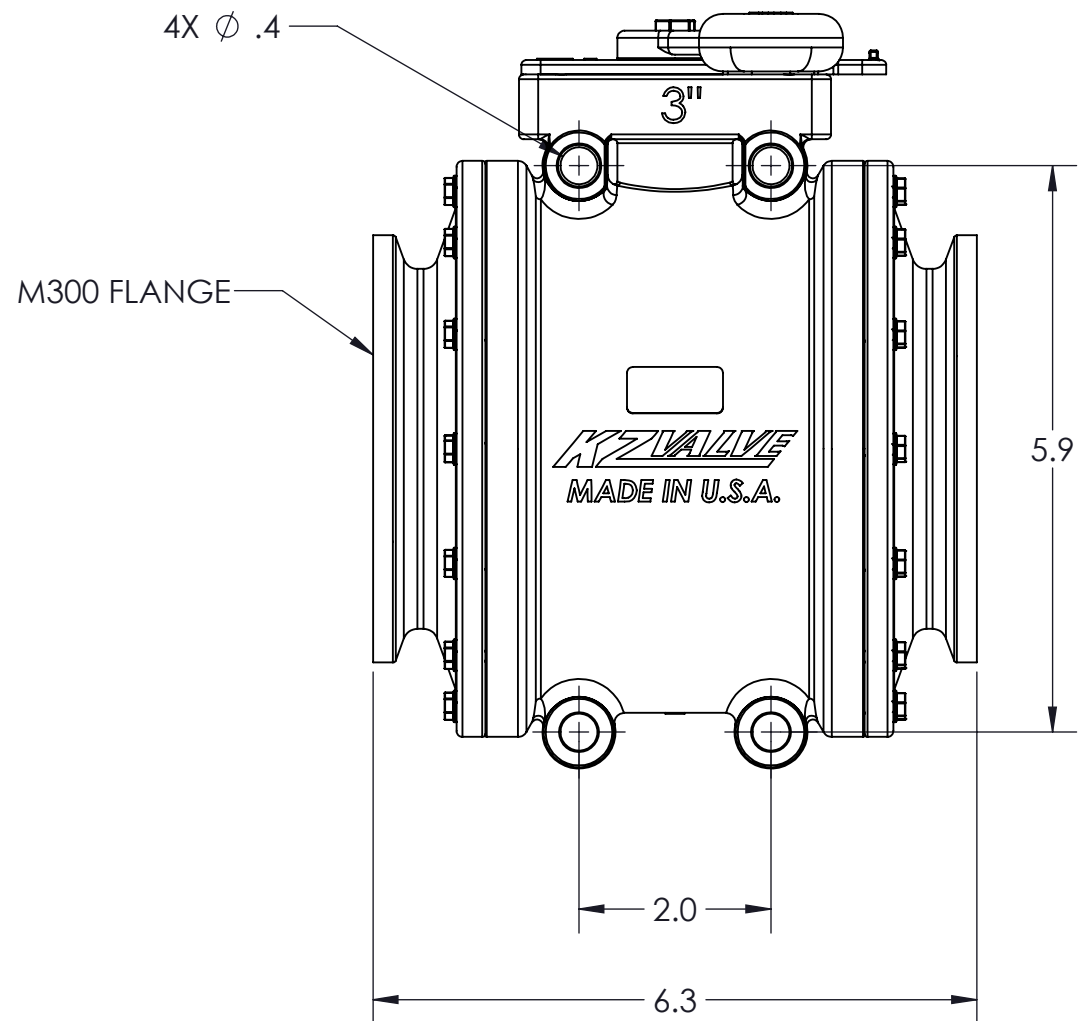
1

CONFIDENTIAL AND PROPRIETARY TO KZCO, INC. UNAUTHORIZED USE, DISCLOSURE OF REPRODUCTION IS PROHIBITED

FOR MORE DETAILS AND INFORMATION, CONTACT: SALES@KZCO.COM

B

B



A

A

4

3

2

1

CONFORMS TO ASME STANDARDS Y14.5-2009

-STANDARD TOLERANCES- -ALL DIMENSIONS IN INCHES [mm]- .X \pm 0.1 .XX \pm 0.01 .XXX \pm 0.005 .X $^{\circ}$ \pm 1 $^{\circ}$	TOTAL RUNOUT: .005 FIM CORNER BREAK: .001/.010 SURFACE FINISH: 125 μ IN 	DESIGNED BY: Larry Erdkamp		23860 KZ PARKWAY GREENWOOD, NE 68366 USA PHONE: +1.402.944.2767 FAX: +1.402.944.2402
		DRAWN BY: Jason Moran		
DENSITY: 0.046 LBM/CU IN MASS: 4.258 LBM SURF AREA: 681.748 SQ IN VOLUME: 93.363 CU IN		APPROVED:	TITLE: VALVE ASSY, MX12 3" 2-WAY MANUAL	
		SCALE: 1:2		
		SIZE: B		
MATERIAL: Material <not specified>			PART NO: M2KM0	REV: 1
			DRAWING NO: SALES_M2KM0	SHEET: 1 OF 2