

4

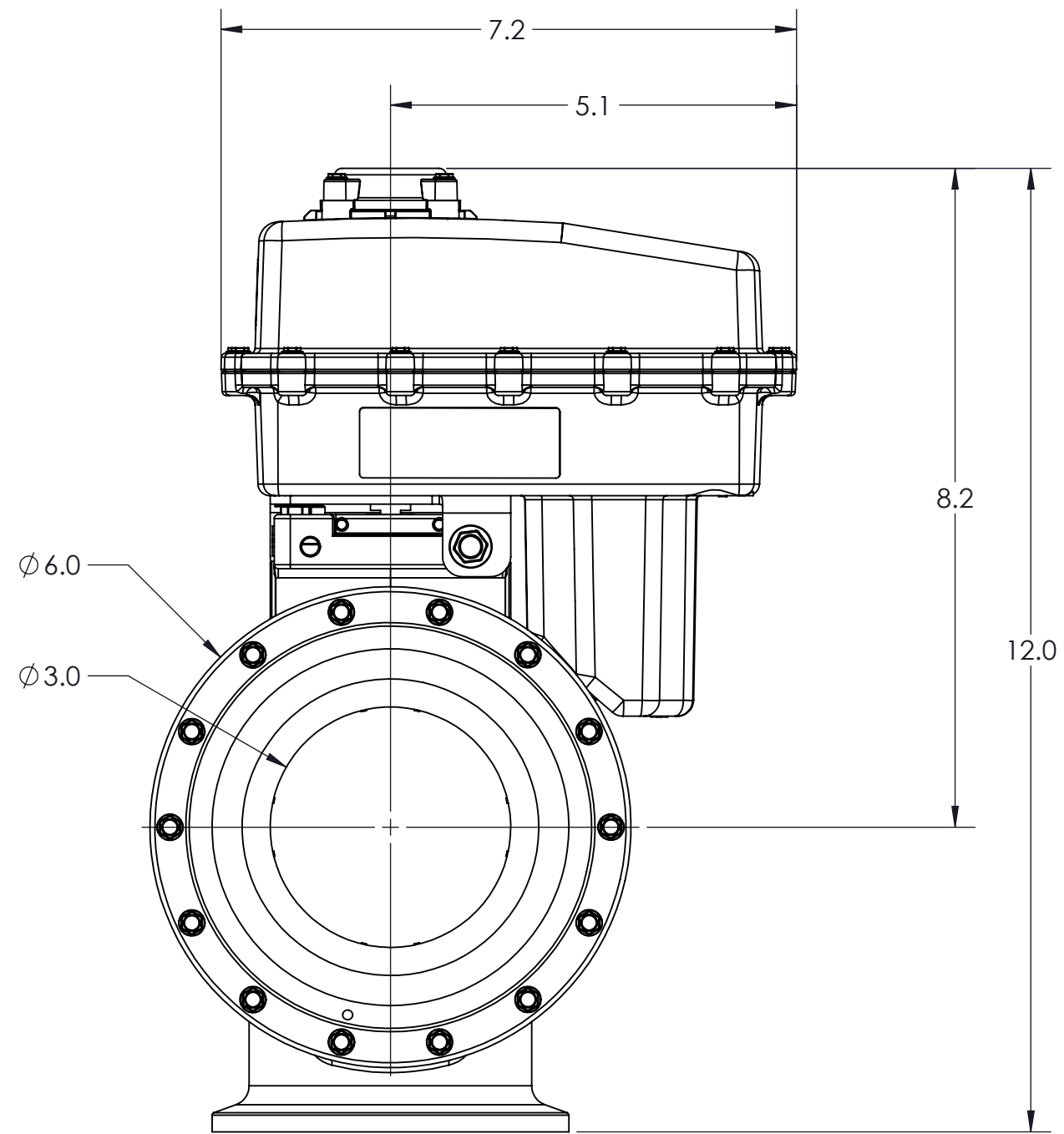
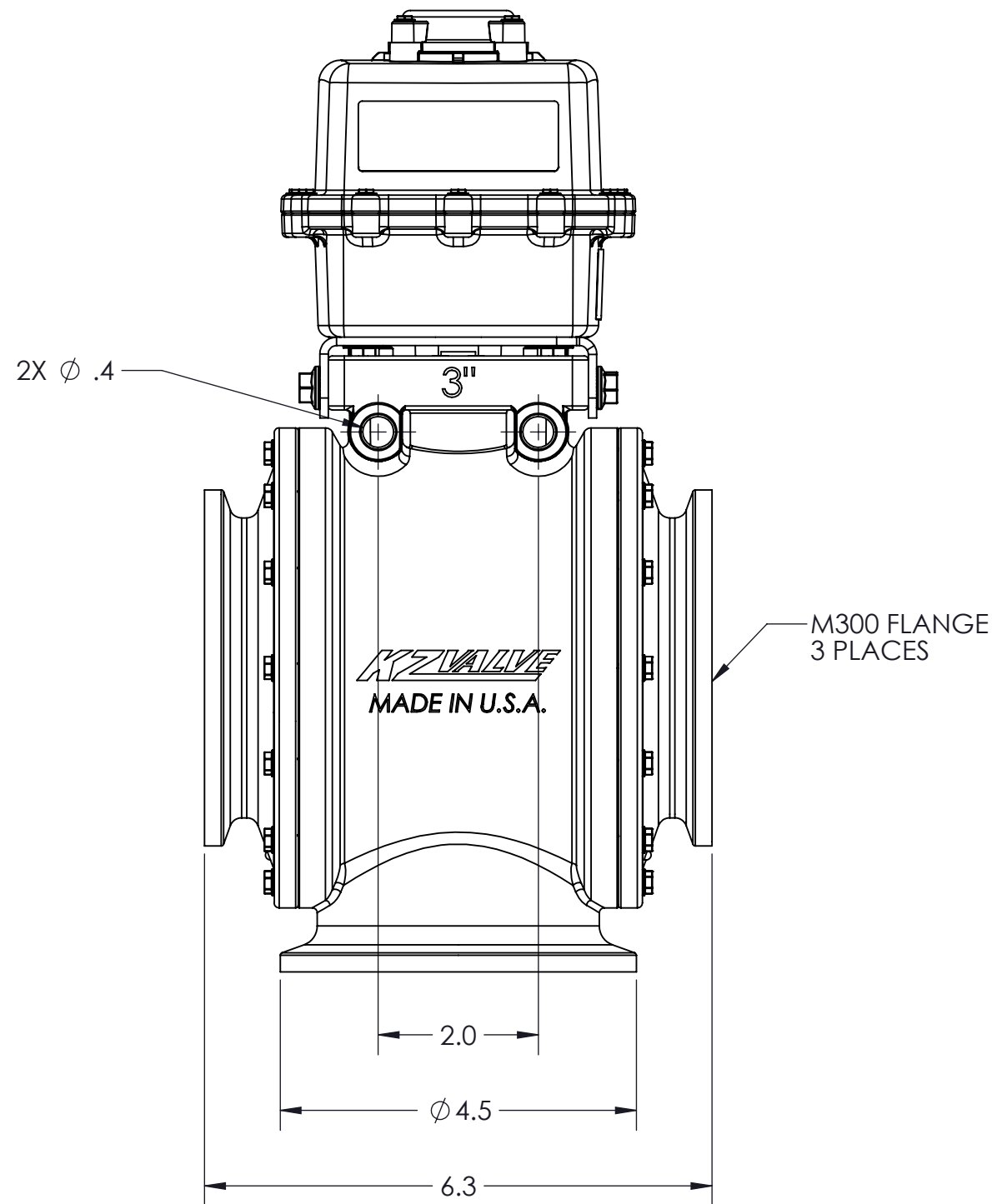
3

2

1

CONFIDENTIAL AND PROPRIETARY TO KZCO, INC. UNAUTHORIZED USE, DISCLOSURE OF REPRODUCTION IS PROHIBITED

FOR MORE DETAILS AND INFORMATION, CONTACT: SALES@KZCO.COM



-STANDARD TOLERANCES- -ALL DIMENSIONS IN INCHES [mm]-	
.X $\pm$ 0.1	TOTAL RUNOUT: .005 FIM CORNER BREAK: .001/.010 SURFACE FINISH: 125 $\mu$ IN
.XX $\pm$ 0.01	
.XXX $\pm$ 0.005	
.X $^{\circ}$ $\pm$ 1 $^{\circ}$	
DENSITY: 0.046 LBM/CU IN MASS: 6.163 LBM SURF AREA: 1141.559 SQ IN VOLUME: 133.620 CU IN	

DESIGNED BY: Jason Moran
DRAWN BY: Jason Moran
APPROVED:
SCALE: 1:2
SIZE: B
MATERIAL: Material <not specified>

		23860 KZ PARKWAY GREENWOOD, NE 68366 USA PHONE: +1.402.944.2767 FAX: +1.402.944.2402
TITLE: ACTUATED VALVE, EH22, 3" BL 3-WAY, 6S@12VDC		
PART NO: M4K22-10DW0-PFV	REV: 1	
DRAWING NO: SALES_M4K22-10DW0-PFV	SHEET: 1 OF 2	

CONFORMS TO ASME STANDARDS Y14.5-2009

4

3

2

1