

4

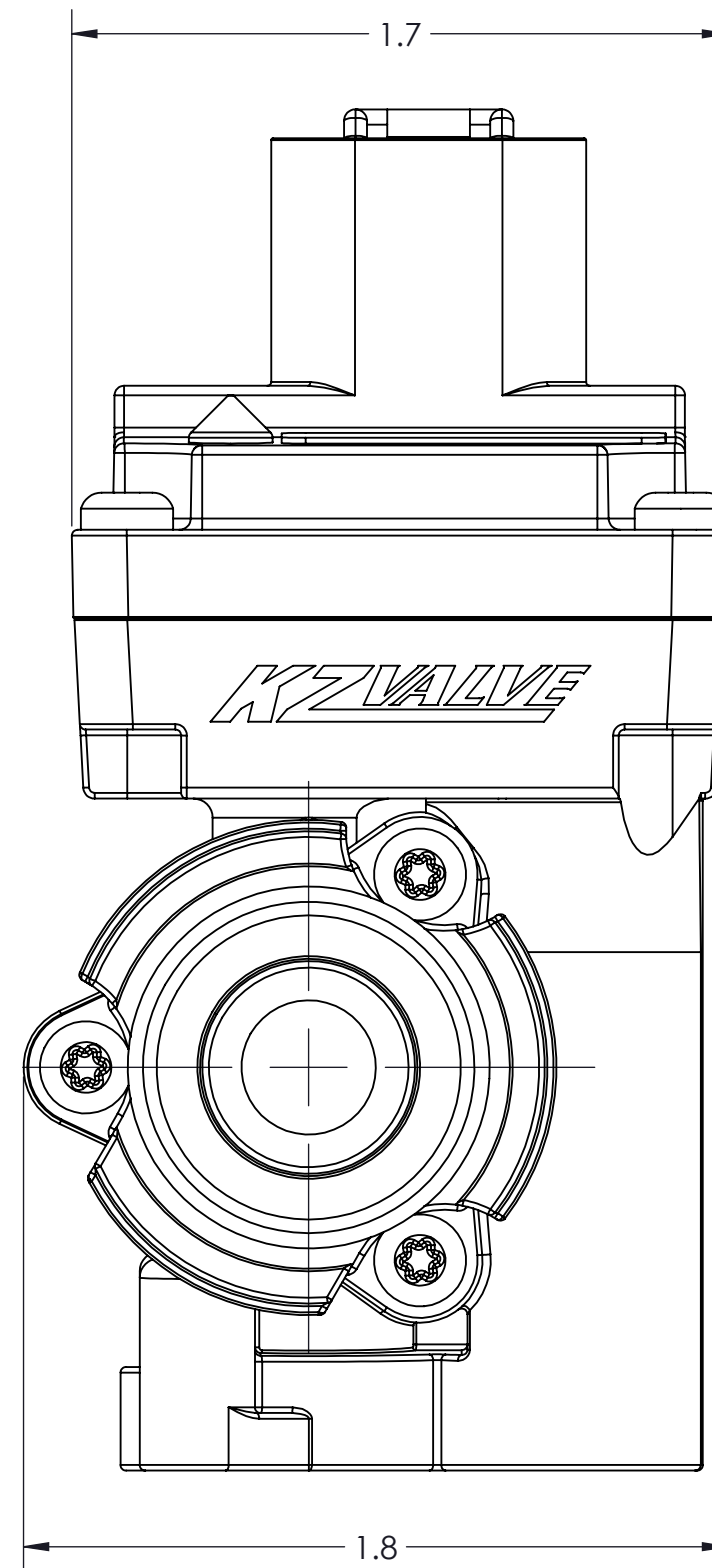
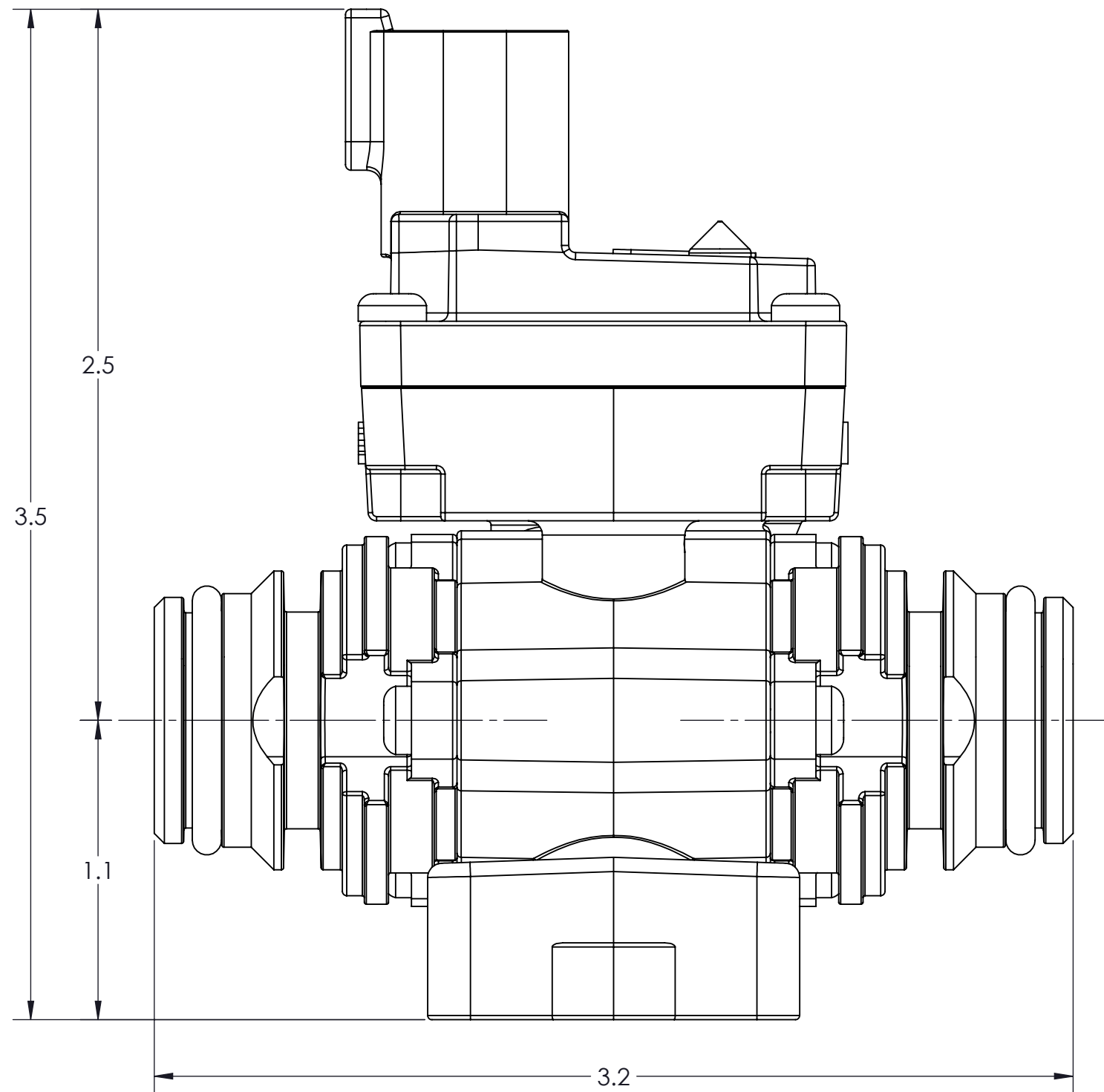
3

2

1

CONFIDENTIAL AND PROPRIETARY TO KZCO, INC. UNAUTHORIZED USE, DISCLOSURE OF REPRODUCTION IS PROHIBITED

FOR MORE DETAILS AND INFORMATION, CONTACT: SALES@KZCO.COM



-STANDARD TOLERANCES- -ALL DIMENSIONS IN INCHES [mm]-	
.X±0.1	TOTAL RUNOUT: .005 FIM
.XX±0.01	MASS: 0.236 LBM
.XXX±0.005	CORNER BREAK: .001/.010
.X°±1°	SURFACE FINISH: 125 µIN
DENSITY: 0.050 LBM/CU IN	
MASS: 0.236 LBM	
SURF AREA: 95.351 SQ IN	
VOLUME: 4.746 CU IN	

DESIGNED BY: Evan Schwahn
DRAWN BY: Aaron Goodwin
APPROVED:
SCALE: 2:1
SIZE: B
MATERIAL: AS NOTED

		23860 KZ PARKWAY GREENWOOD, NE 68366 USA PHONE: +1.402.944.2767 FAX: +1.402.944.2402	
TITLE: ACTUATED VALVE, EH8, 3/8" 2-WAY SS BALL, 1/2" QD, 0.2S@12VDC, DEUTSCH LED			
PART NO: NAZC28-10DA0-D01		REV: 1	
DRAWING NO: SALES_NAZC28-10DA0-D01		SHEET: 1 OF 2	

CONFORMS TO ASME STANDARDS Y14.5-2009

4

3

2

1

B

B

A

A