

4

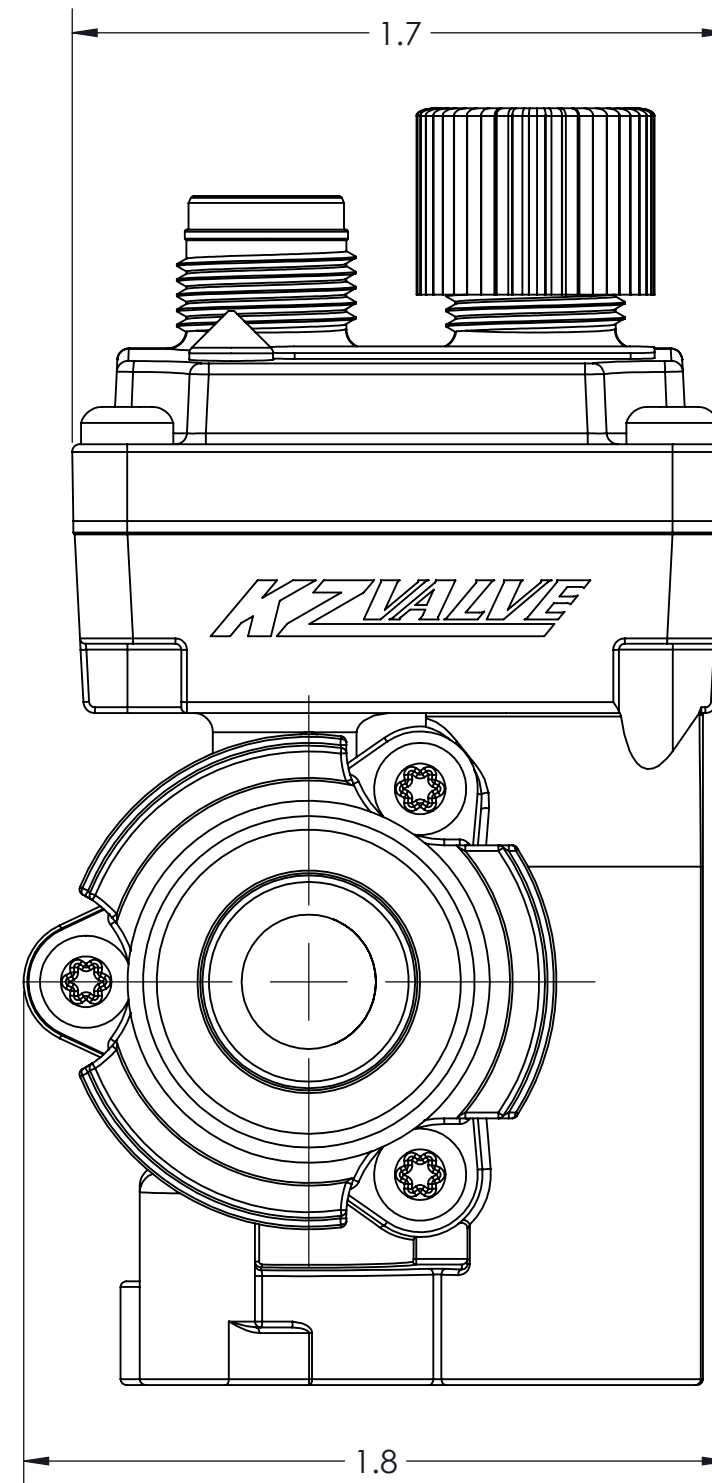
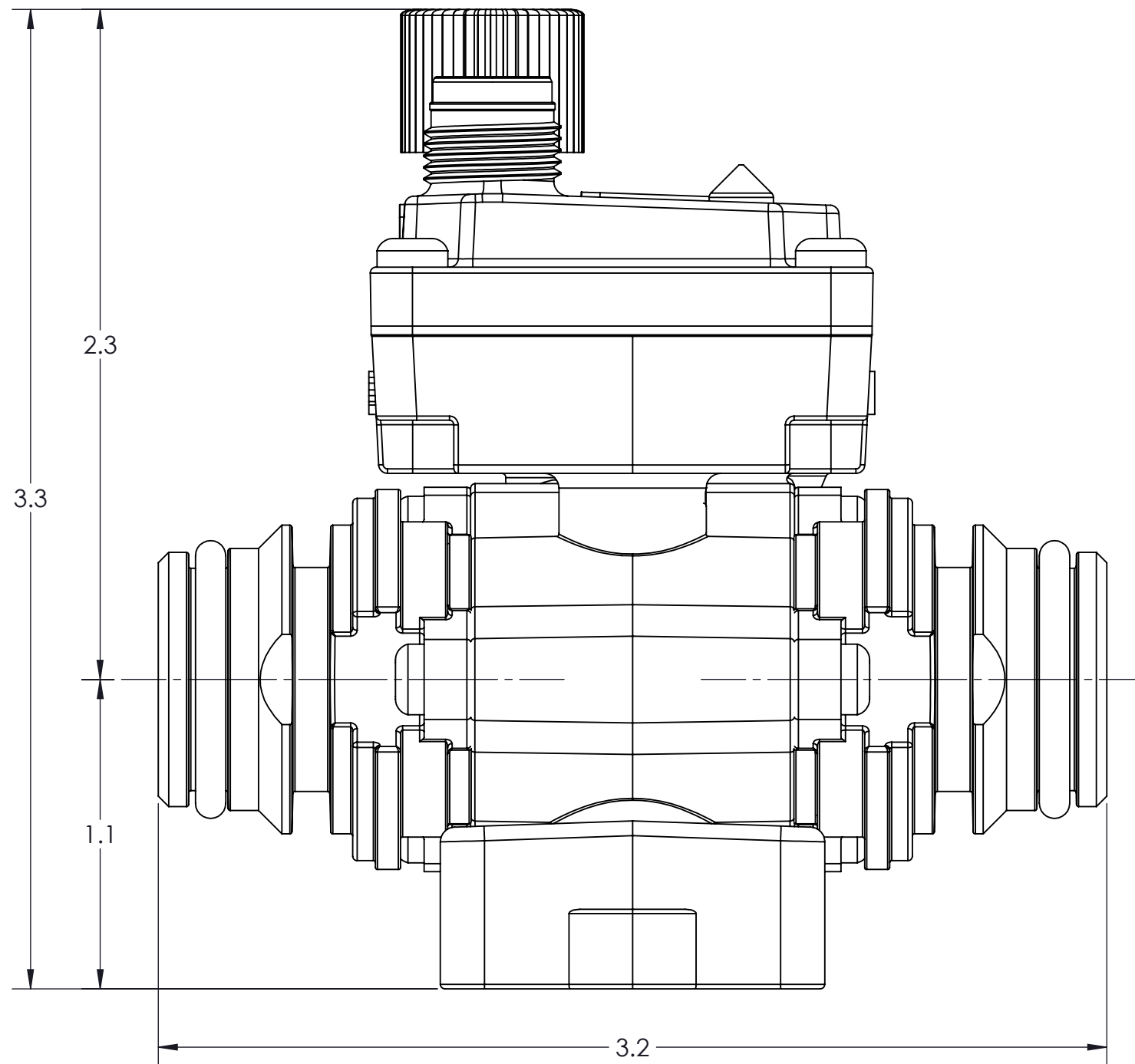
3

2

1

CONFIDENTIAL AND PROPRIETARY TO KZCO, INC. UNAUTHORIZED USE, DISCLOSURE OF REPRODUCTION IS PROHIBITED

FOR MORE DETAILS AND INFORMATION, CONTACT: SALES@KZCO.COM



-STANDARD TOLERANCES- -ALL DIMENSIONS IN INCHES [mm]-	
.X±0.1	TOTAL RUNOUT: .005 FIM
.XX±0.01	CORNER BREAK: .001/.010
.XXX±0.005	SURFACE FINISH: 125 µIN
.X°±1°	
DENSITY: 0.070 LBM/CU IN MASS: 0.335 LBM SURF AREA: 96.884 SQ IN VOLUME: 4.756 CU IN	

CONFORMS TO ASME STANDARDS Y14.5-2009

DESIGNED BY: Inna Zevakina
 DRAWN BY: Aaron Goodwin
 APPROVED:
 SCALE: 2:1
 SIZE: B
 MATERIAL: AS NOTED



23860 KZ PARKWAY
 GREENWOOD, NE 68366 USA
 PHONE: +1.402.944.2767
 FAX: +1.402.944.2402

TITLE: ACTUATED VALVE, EH8, 3/8" 2-WAY SS BALL,
 1/2" QD, 0.2S@24VDC, SINGLE M12 LED

PART NO: NAZC28-10FAS-R01	REV: 1
DRAWING NO: SALES_NAZC28-10FAS-R01	SHEET: 1 OF 1

4

3

2

1

B

B

A

A