

4

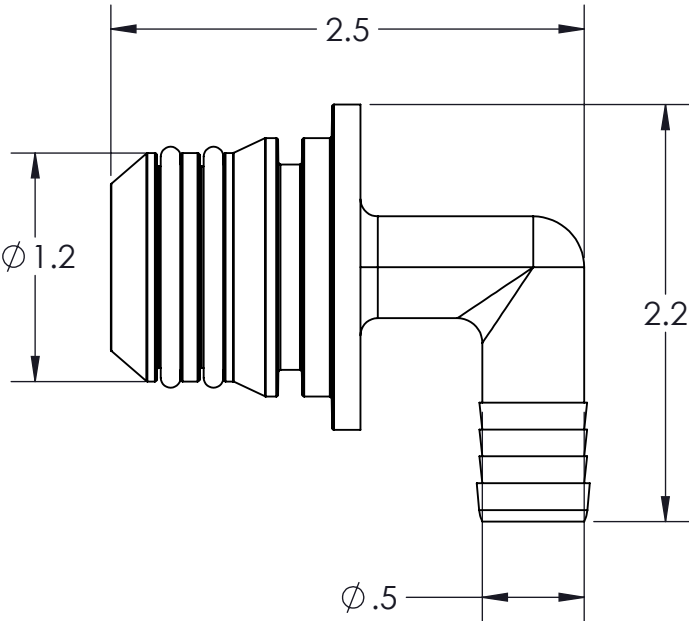
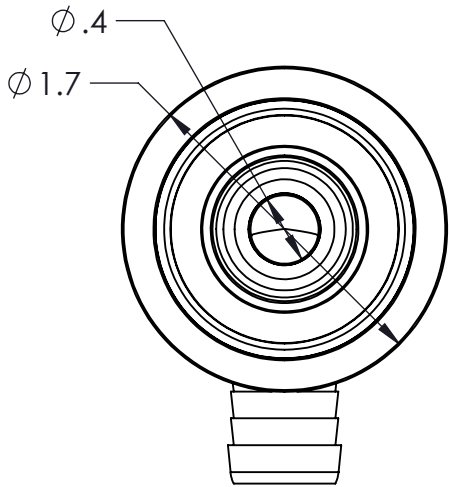
3

2

1

CONFIDENTIAL AND PROPRIETARY TO  
KZCO, INC. UNAUTHORIZED USE, DISCLOSURE  
OF REPRODUCTION IS PROHIBITED

FOR MORE DETAILS AND INFORMATION, CONTACT: SALES@KZCO.COM



CONFORMS TO ASME  
STANDARDS Y14.5-2009

-STANDARD TOLERANCES- -ALL DIMENSIONS IN INCHES [mm]-		DESIGNED BY: Larry Erdkamp		<div><div>23860 KZ PARKWAY GREENWOOD, NE 68366 USA PHONE: +1.402.944.2767 FAX +1.402.944.2402</div></div>	
.X±0.1 .XX±0.001 .XXX±0.005 .X°±1°	TOTAL RUNOUT: .005 FIM CORNER BREAK: .001/.010 SURFACE FINISH: 125 µIN 	DRAWN BY: Aaron Goodwin			
		APPROVED:		TITLE: FITTING ASSY, 1/2" HOSEBARB, 90, POLY	
		SCALE: 1:1			
DENSITY: 0.038 LBM/CU IN MASS: 0.053 LBM SURF AREA: 21.743 SQ IN VOLUME: 1.403 CU IN		SIZE: B		PART NO: QHP-050L REV: 1	
		MATERIAL: Material <not specified>		DRAWING NO: SALES_QHP-050L SHEET: 1 OF 1	

4

3

2

1