

4

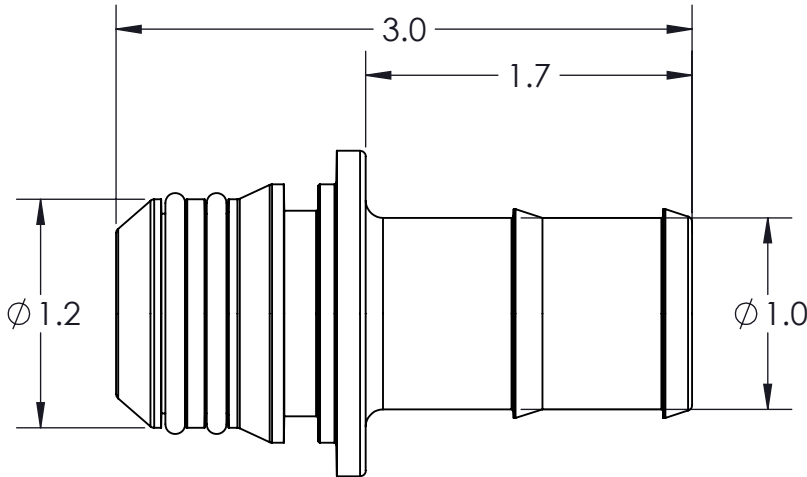
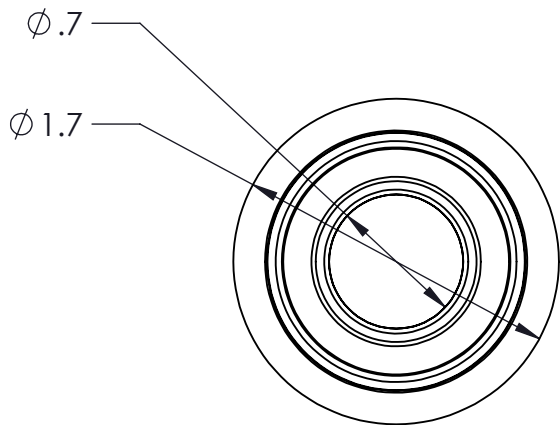
3

2

1

CONFIDENTIAL AND PROPRIETARY TO  
KZCO, INC. UNAUTHORIZED USE, DISCLOSURE  
OF REPRODUCTION IS PROHIBITED

FOR MORE DETAILS AND INFORMATION, CONTACT: SALES@KZCO.COM



CONFORMS TO ASME  
STANDARDS Y14.5-2009

-STANDARD TOLERANCES- -ALL DIMENSIONS IN INCHES [mm]-	
.X±0.1 .XX±0.001 .XXX±0.005 .XX°±1°	TOTAL RUNOUT: .005 FIM CORNER BREAK: .001/.010 SURFACE FINISH: 125 µIN 
DENSITY: 0.038 LBM/CU IN MASS: 0.065 LBM SURF AREA: 24.643 SQ IN VOLUME: 1.721 CU IN	

DESIGNED BY: Larry Erdkamp	
DRAWN BY: Aaron Goodwin	
APPROVED:	TITLE: FITTING ASSY, 1" HOSEBARB, W/ O-RINGS
SCALE: 1:1	
SIZE: B	PART NO: QHP-100
MATERIAL: Material <not specified>	DRAWING NO: SALES_QHP-100

23860 KZ PARKWAY GREENWOOD, NE 68366 USA PHONE: +1.402.944.2767 FAX: +1.402.944.2402	
REV: 1	
SHEET: 1 OF 1	