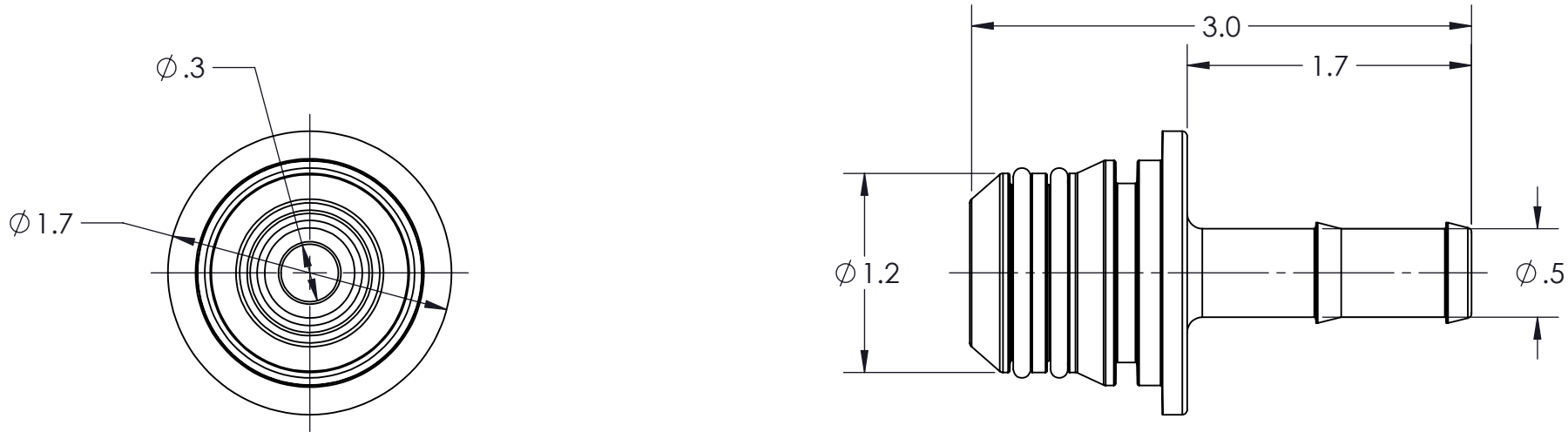


FOR MORE DETAILS AND INFORMATION, CONTACT: SALES@KZCO.COM



CONFORMS TO ASME
STANDARDS Y14.5-2009

-STANDARD TOLERANCES- -ALL DIMENSIONS IN INCHES [mm]-		DESIGNED BY: Larry Erdkamp		<div><div>23860 KZ PARKWAY GREENWOOD, NE 68366 USA PHONE: +1.402.944.2767 FAX: +1.402.944.2402</div></div>	
.X±0.1 .XX±0.001 .XXX±0.005 .X°±1°	TOTAL RUNOUT: .005 FIM CORNER BREAK: .001/.010 SURFACE FINISH: 125 µIN 	DRAWN BY: Aaron Goodwin			
DENSITY: 0.038 LBM/CU IN MASS: 0.051 LBM SURF AREA: 20.279 SQ IN VOLUME: 1.343 CU IN		APPROVED:		TITLE: FITTING ASSY, 1/2" HOSEBARB	
		SCALE: 1:1			
		SIZE: B		PART NO: QHP-050	
		MATERIAL: AS NOTED		REV: 1	
				DRAWING NO: SALES_QHP-050	
				SHEET: 1 OF 1	